

EQACC SOLAR

What type of resistor should I use for a 12v inverter



Overview

How do I choose a resistor for a 12V led?

To calculate the appropriate resistor for a 12v LED, you'll need to know two key values: the forward voltage of the LED and the desired forward current. The forward voltage is usually provided in the LED specifications, typically ranging between 2 to 3.5 volts, depending on the color and type of LED.

Why should you use a 12V led resistor?

Using a 12V led resistor is critical for preventing LED damage, optimizing performance and preventing unexpected failures. By understanding the underlying principles of voltage drop, resistance calculations, and resistor power ratings, you can confidently navigate the world of LED lighting and create long-lasting, effective electronic projects.

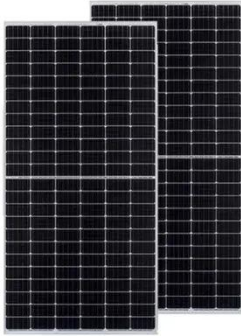
Do I need a resistor for a 12V led module?

Integrated Circuits: Some 12v LED modules come pre-equipped with resistors or drivers that regulate voltage and current, ensuring safe operation. In these cases, you do not need to add an external resistor. However, always check the specifications of the specific LED product you are using. 2. Low-Voltage LEDs Linked to 12v Supply.

Can a 12V led run without a resistor?

If you connect a 12v LED directly to a 12v power source without a resistor, the LED may draw excessive current. This can lead to overheating, which compromises the internal semiconductor structure, ultimately resulting in a failure of the LED.

What type of resistor should I use for a 12v inverter



A Comprehensive Guide to Choosing the Right Resistor

Sarah Aman Resistors Resistors are arguably the most fundamental components in the world of electronics. Resistors are essential for controlling the flow of current and ...

Resistor Types and Selection criteria : A Complete Guide

Explore resistor types and selection criteria. Learn how to choose the right resistor for your circuit design and project needs.



Do 12v LEDs Really Need a Resistor? Your Ultimate Guide

Each type of LED comes with its own characteristics and requirements, so understanding the specific type will help determine if a resistor is necessary. Can I connect ...

What Size Resistor Do I Need

When it comes to electronic circuits, selecting the appropriate resistor size is crucial for achieving desired performance and preventing damage to components. ...



What Resistor to Use for LEDs When ...

Connecting LEDs to a 12V battery requires a resistor to limit the current and prevent damage to the LED. The value of the resistor depends on the ...

What Resistor to Use for LEDs When Connected to a 12V ...

Connecting LEDs to a 12V battery requires a resistor to limit the current and prevent damage to the LED. The value of the resistor depends on the LED's forward voltage and the desired ...



What Size Resistor Do I Need

When it comes to electronic circuits, selecting the appropriate resistor size is crucial for achieving desired performance and preventing ...



Choosing the Right LED Resistor for 12V: A Comprehensive ...

Learn how to choose the correct LED resistor for 12V applications. This guide covers calculations, types of resistors, wiring and frequently asked questions, ensuring long ...



Inverter pre-charge resistor size?

It has been suggested that the my inverter capacitors are sending too much inrush of current to the BMS & that a pre-charge resistor should solve this problem. What size pre ...

Choosing the Resistor to Use With LEDs

Choosing the Resistor to Use With LEDs:
This question gets asked every day in
Answers and the Forums: What resistor
do I use with my LEDs? So I've put

together several different ways to ...



Resistor solutions within inverter applications

Inverter Power Resistor Applications The image below shows a typical inverter topology with the various resistor requirements highlighted. These requirements may include ...

how to select a resistor for inverter

The resistance selection in the high voltage inverter is a very important part, and improper selection may affect the performance and stability of the entire equipment. When ...



Choosing the Right LED Resistor for 12V: A ...

Learn how to choose the correct LED resistor for 12V applications. This guide covers calculations, types of resistors, wiring and ...



Contact Us

For catalog requests, pricing, or partnerships, please visit:
<https://eqacc.co.za>