

**EQACC SOLAR**

# **What size inverter is suitable for 12v200ah**



✓ LIQUID/AIR COOLING

✓ PROTECTION IP54/IP55

✓ PCS EMS

✓ BATTERY /6000 CYCLES

## Overview

---

How do I choose the right inverter size for my 200Ah lithium battery?

When it comes to choosing the right inverter size for your 200Ah lithium battery, there are a few factors you'll need to consider. The first is the power needs of the devices you plan on running off the inverter. Take into account their wattage requirements and how many devices will be connected at once.

Which 12V 240V Inverter should I buy?

If you need a heavy-duty 12V to 240V inverter, the Silverline 263764 is a good, if expensive, choice. The 700W maximum output was the highest on test, and the fan didn't kick in until we plugged in the laptop and the battery charger. Another plus point was the quietness of the fan, as it was only 5dB louder than the ambient noise inside the car.

What does a 12V to 230V power inverter do?

A 12V to 230V power inverter converts 12V DC power to 230V AC power. It is ideal for various users including caravaners, truck drivers, doctors, electricians, joiners, and anyone who enjoys camping or boating.

How do I choose a battery inverter?

Additionally, pay attention to the voltage compatibility between your battery and the chosen inverter. Ensure they are both compatible (most inverters work with standard 12V batteries) and match each other's specifications for optimal performance.

## What size inverter is suitable for 12v200ah

---



### Which Inverter is Suitable for a 200Ah Battery?

For a 12V 200Ah battery, a 1000W inverter is generally a good choice. This size can power a variety of household devices, ensuring that ...

[Get Price](#)

### What Size Inverter Can I Run Off a 200Ah ...

You can run an inverter rated between 1500W and 2400W off a 200Ah lithium battery depending on voltage and usage. Typically, a 12V ...

[Get Price](#)



### What Size Inverter Do I Need for a 200Ah ...

For instance, a 12V 200Ah battery's usable energy is about 1920Wh, supporting continuous inverter loads up to roughly 1500-2000W. ...

[Get Price](#)



### What Size Inverter Do I Need for a 200Ah Lithium Battery

For instance, a 12V 200Ah battery's usable energy is about 1920Wh, supporting continuous inverter loads up to roughly 1500-2000W. Which inverter size is suitable for ...

[Get Price](#)



## Choosing the Best Inverter Size for a 200Ah Lithium Battery

To calculate the wire and fuse size needed for the inverter you would take the inverter wattage, divide by 12V, then divide by 85% efficiency.

[Get Price](#)

## Choosing the Right Inverter Size for a 200Ah Lithium Battery

When selecting an inverter for a 200Ah lithium battery, it is important to understand your energy needs and consider factors such as power consumption, inverter types, and installation ...

[Get Price](#)



## What Size Inverter Is Best for a 200Ah Battery?



A 200Ah battery typically pairs with a 1,500W-3,000W inverter, depending on power needs. For continuous loads, select an inverter with 1.5x your calculated wattage to avoid overloads. Pure ...

[Get Price](#)

## Which Inverter is Best for 200Ah Battery?

Find out which inverter works best with a 200Ah battery for reliable backup and efficient performance. This guide explains ideal inverter types, supported loads, and smart ...

[Get Price](#)



**18650** 3.7V  
Li-ion  
RECHARGEABLE BATTERY  
**2000mAh**



## Choosing the Best Inverter Size for a 200Ah ...

To calculate the wire and fuse size needed for the inverter you would take the inverter wattage, divide by 12V, then divide by 85% ...

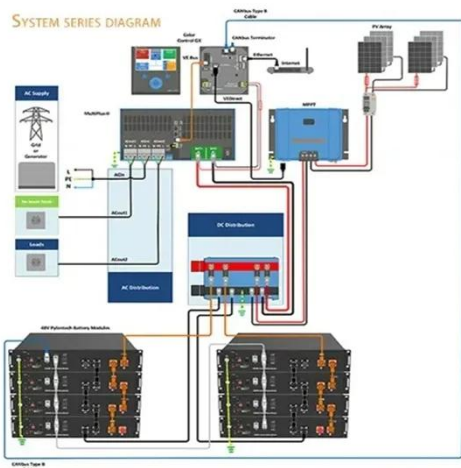
[Get Price](#)

## What Size Inverter Can I Run Off a 200Ah Lithium Battery?

You can run an inverter rated between 1500W and 2400W off a 200Ah lithium battery depending on voltage and usage.

Typically, a 12V 200Ah battery supports up to about ...

[Get Price](#)



## Best Inverter for 200Ah Battery: A Complete Guide 2025

Find the best inverter for your 200Ah battery setup. Compare top models, get expert tips, and shop reliable inverters for RVs, homes, and off-grid use.

[Get Price](#)

## What size of 1000W inverter is good for a 12 volt 200Ah ...

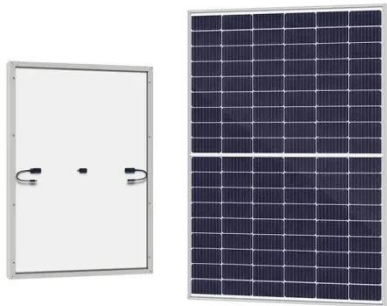
Conclusion In general, the combination of 12V 200Ah battery and 1000 watt power inverter is very suitable for a variety of application scenarios, such as home backup power, ...

[Get Price](#)



## Which Inverter is Suitable for a 200Ah Battery?

For a 12V 200Ah battery, a 1000W inverter is generally a good choice. This



size can power a variety of household devices, ensuring that the battery isn't over-consumed and ...

[Get Price](#)

---

## What Size of Inverter Is Good for a 200Ah Battery?

The best inverter size for a 200Ah battery depends on the system voltage and your power needs. A 12V 200Ah battery typically pairs well with a 1000W-2000W inverter, while a 24V setup can ...

[Get Price](#)



---

## Contact Us

For catalog requests, pricing, or partnerships, please visit:  
<https://eqacc.co.za>