

## **EQACC SOLAR**

**The solar inverter automatically  
cuts off power at noon**



## Overview

---

Do solar inverters shut off when the grid goes down?

Most solar inverters are sold with an 'automatic shut off switch' that detects when the power grid goes down and shuts down the entirety of the solar power system to protect electricity line workers.

Can a solar inverter shut off unexpectedly?

Solar inverters are a crucial component of any solar panel system, converting the DC power generated by the panels into AC output that can be used by home appliances. However, solar inverters can sometimes shut off unexpectedly, causing the entire system to go offline. There are a few common reasons for this to happen.

Why do solar inverters automatically switch off during a power cut?

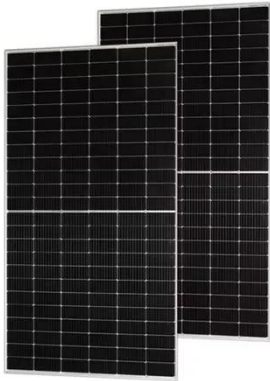
During a power cut engineers will be working on the grid and if solar panels or batteries are in operation there is a risk the engineers could be electrocuted by the electricity being generated. This is why solar inverters are designed to automatically switch off when a power cut is detected.

How can I prevent my solar inverter from shutting off?

You can prevent your solar inverter from shutting off by ensuring that your system is not overloaded. You can do this by either adding more panels to your system or by upgrading your current inverter to one that can handle the amount of electricity generated by your system.

## The solar inverter automatically cuts off power at noon

---



### Do Solar Inverters Turn Off At Night?

Have you ever wondered if solar inverters turn off at night? The answer may surprise you! Solar inverters, the essential components of solar power systems, do not actually turn off when the ...

[Get Price](#)

---

### Does a Solar Inverter Work at Night? Here's the Real Answer

If you're exploring solar energy, you might wonder how the system works, especially at night. One common question is, "Does a solar inverter work at night?" In this ...



[Get Price](#)

---



### Does a Solar Inverter Work at Night? Here's ...

If you're exploring solar energy, you might wonder how the system works, especially at night. One common question is, "Does a solar ...

[Get Price](#)

---

## Solar inverter turn off at night + reasons

Why solar inverter shut off at night Solar inverter turning off at night is a normal and necessary function for solar inverters so that they can conserve energy and protect the system ...

[Get Price](#)



## Does the Solar Inverter Turn Off at Night?

This article explains whether solar inverter will turn off at night, why inverter automatically enter standby or shut off mode at night due to insufficient solar voltage, and how ...

[Get Price](#)

## Do solar inverters turn off at night ? , Pas Solar

Yes, the solar inverter turns off at night. The reason for that is since no sunbeam hits the solar panels at night, the solar panels do not generate electricity. And since there is no ...

[Get Price](#)



## Will the Solar Inverter Automatically Stop Working at Night?

Explore how solar inverters operate at



night and discover the best solar inverter for home use to maximize your solar energy efficiency.

[Get Price](#)

## Do solar inverters turn off at night ? , Pas Solar

Yes, the solar inverter turns off at night. The reason for that is since no sunbeam hits the solar panels at night, the solar panels do not ...

[Get Price](#)



## Do Solar Inverters Shut Down At Night

Most solar inverters come equipped with an automatic shut-off switch that detects grid power outages, immediately disabling the entire solar system to protect line workers.

[Get Price](#)

## Solar inverter turn off at night + reasons

Why solar inverter shut off at night Solar inverter turning off at night is a normal and necessary function for solar

inverters so that they ...

[Get Price](#)



## What Happens to Solar Inverters at Night? Do ...

The nocturnal operation of solar inverters is a critical aspect of solar energy systems that requires careful consideration and optimization. ...

[Get Price](#)

## Why does an inverter shut down?

The allowable voltage in the connection cable of the inverter is being exceeded, because the cable is too thin. The inverter is connected to the phase with the highest voltage. Checklist for ...

[Get Price](#)



## What Happens to Solar Inverters at Night? Do They Shut ...

The nocturnal operation of solar inverters is a critical aspect of solar

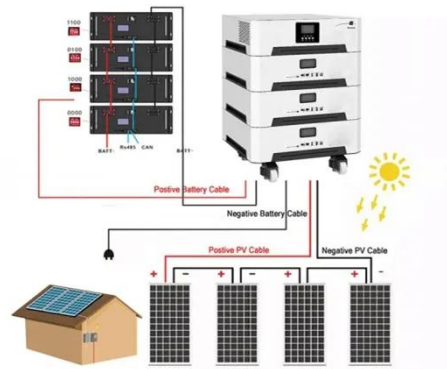


energy systems that requires careful consideration and optimization. While solar inverters do not shut ...

[Get Price](#)

## Solar Inverter Keep Shutting Off? Why and How to Fix It!

Why Does My Solar Inverter Keep Shutting Off - Main Reason A solar inverter is designed to handle a certain amount of power. If it exceeds that limit, it will automatically shut ...



[Get Price](#)



## Solar Inverter Keep Shutting Off? Why and ...

Why Does My Solar Inverter Keep Shutting Off - Main Reason A solar inverter is designed to handle a certain amount of power. ...

[Get Price](#)

## Contact Us

For catalog requests, pricing, or partnerships, please visit:  
<https://eqacc.co.za>