

## EQACC SOLAR

**Solar panels generate full power during the period**

**ESS**



## Overview

---

One thing that influences the solar output received from your solar panels is their temperature coefficient. It is always listed as a negative number on the datasheet of a solar panel. The closer that number is to 0 th.

Do solar panels produce more electricity during peak sunlight hours?

In general, solar panels will produce more electricity during peak sunlight hours (between 10am and 4pm), but can still generate power outside of those times. The actual output of a solar panel also depends on other factors such as cloud cover, temperature, and shading from trees or buildings.

When do solar panels produce the most energy?

With an increase in intensity, solar panels tend to produce most energy between late morning hours to peak afternoon hours, that is 11:00 am to 04:00 pm. This decreases as evening approaches, and it falls to 0 at night. This should have helped you understand solar panel output vs time of day. What is Solar Panel Output Winter Vs Summer?

.

When do solar panels start generating electricity?

So while solar panels can start generating electricity right away, it takes a little bit of time for them to reach full power output. Solar panels are often thought of as only providing power during the daytime, but they actually output electricity 24 hours a day.

Do solar panels produce electricity 24 hours a day?

Solar panels are often thought of as only providing power during the daytime, but they actually output electricity 24 hours a day. The amount of electricity produced by a solar panel varies throughout the day and is dependent on the amount of sunlight that hits the panel.

## Solar panels generate full power during the period

---



### Solar Panel Output Winter Vs Summer

Solar Panel Output Winter Vs Summer: During winters, the optimum power generation level of the solar panel is lower than that of summers.

[Get Price](#)

### Seasonal Solar Panel Optimization: Maximize ...

Every season brings unique challenges for solar power systems. This practical guide identifies the most common seasonal issues ...

[Get Price](#)



### Seasonal Solar Panel Optimization: Maximize Performance ...

Every season brings unique challenges for solar power systems. This practical guide identifies the most common seasonal issues affecting solar panels and provides proven ...

[Get Price](#)



## How Sunlight Availability Impacts Daily Solar Energy Output

Understanding peak sun hours is the first step toward optimising your solar power system's daily output. The higher the number, the more efficient and cost-effective your solar installation will ...



[Get Price](#)



**TAX FREE**

**ENERGY STORAGE SYSTEM**

**Product Model**  
HJ-ESS-215A(100KW/215KWh)  
HJ-ESS-115A(50KW/115KWh)

**Dimensions**  
1600\*1280\*2200mm  
1600\*1200\*2000mm

**Rated Battery Capacity**  
215KWH/115KWH

**Battery Cooling Method**  
Air Cooled/Liquid Cooled



## What Do Peak and Off Peak Sun Hours mean ...

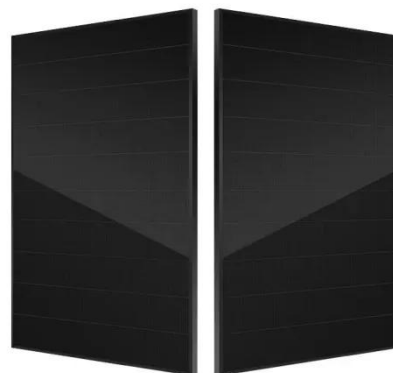
The hours outside of the peak sun hour window are your off-peak sunlight hours. While your solar system continually generates ...

[Get Price](#)

## How do peak and off-peak hours align with solar generation ...

Off-Peak Hours Definition: Times outside peak sun hours or peak electricity demand periods. Alignment with Solar Generation: Although solar panels are less efficient ...

[Get Price](#)



## Understanding Peak Sun Hours and Solar Panels

To harness the full potential of solar energy, it's crucial to understand the

concept of peak sun hours. In this article, we will delve ...

[Get Price](#)



## When Do Photovoltaic Panels Work Best? Your Guide to Efficient Solar

The Solar Sweet Spot: Understanding Peak Generation Windows Ever wondered why your photovoltaic panels suddenly become overachievers during specific daylight hours? Let's cut ...

[Get Price](#)



✓ IP65/IP55 OUTDOOR CABINET

✓ WATERPROOF OUTDOOR CABINET

✓ 42U/27U

✓ OUTDOOR BATTERY CABINET

## Solar Performance in Various Weather and ...

Solar Panels: Modern solar panels, such as ANERN's N-Series, incorporate technologies like half-cut cells and bifacial modules. ...

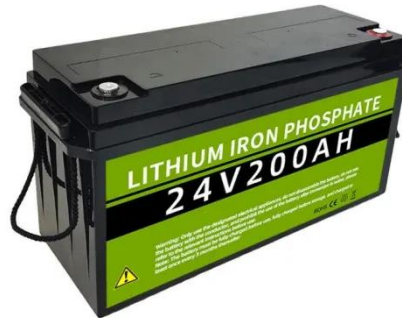
[Get Price](#)

## Solar Performance in Various Weather and Seasons

Solar Panels: Modern solar panels, such as ANERN's N-Series, incorporate

technologies like half-cut cells and bifacial modules. These advancements improve light ...

[Get Price](#)



## How do peak and off-peak hours align with ...

Off-Peak Hours Definition: Times outside peak sun hours or peak electricity demand periods. Alignment with Solar Generation: ...

[Get Price](#)

## Solar Panels Have the Potential to Generate Electricity 24/7

Traditional Solar Power: Limitations and Challenges One of the primary limitations of traditional solar power systems lies in their dependency on sunlight. Solar panels can only ...

[Get Price](#)



## When Do Solar Panels Produce the Most ...

In general, solar panels will produce more electricity during peak sunlight



hours (between 10am and 4pm), but can still generate ...

[Get Price](#)

## Understanding Peak Sun Hours and Solar Panels

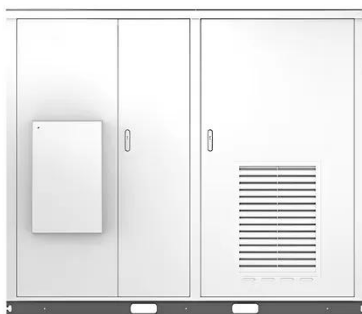
To harness the full potential of solar energy, it's crucial to understand the concept of peak sun hours. In this article, we will delve into the world of peak sun hours and solar panels, ...



**2MW / 5MWh**  
**Customizable**

[Get Price](#)

Solar



## When Do Solar Panels Produce the Most Electricity?

In general, solar panels will produce more electricity during peak sunlight hours (between 10am and 4pm), but can still generate power outside of those times. The actual ...

[Get Price](#)

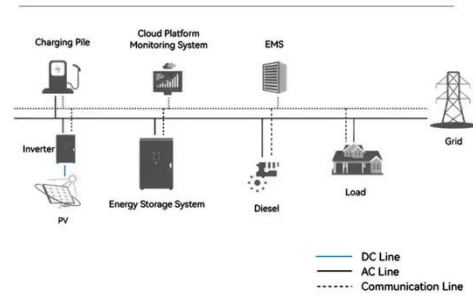
## What Do Peak and Off Peak Sun Hours mean for Solar ...

The hours outside of the peak sun hour window are your off-peak sunlight hours. While your solar system continually

generates energy when sunlight strikes the panels (even ...

[Get Price](#)

### System Topology



## Contact Us

For catalog requests, pricing, or partnerships, please visit:  
<https://eqacc.co.za>