

EQACC SOLAR

Ring inverter output voltage is low



Overview

Why is my inverter low voltage?

Another possible cause could be an inadequate power source or improper electrical connections. Faulty wiring can also result in voltage fluctuations. If you are experiencing inverter low voltage problems, it's essential to diagnose the issue accurately. Start by checking the battery health.

What is inverter low voltage?

Now that we know what inverter low voltage is, let's explore some common causes behind it. One prevalent cause could be a faulty battery. An old or damaged battery may not be able to provide sufficient power, leading to low voltage from the inverter. Another possible cause could be an inadequate power source or improper electrical connections.

How to troubleshoot an inverter?

Once you have identified the problem, you can begin troubleshooting it. Here are some steps to follow: Check the input voltage. The input voltage to the inverter should be within the specified range. If the input voltage is too low or too high, the inverter may not function properly. Check the output voltage and frequency.

How do I know if my inverter is low voltage?

If you are experiencing inverter low voltage problems, it's essential to diagnose the issue accurately. Start by checking the battery health. Measure its voltage output using a multimeter to ensure it is within the recommended range. If the reading is below the recommended level, it's time to replace the battery.

Ring inverter output voltage is low



How to Address Inverter Low Voltage Issues for Reliable ...

Inverter low voltage is a common issue that can disrupt industrial operations, affecting automation systems and energy management efficiency. It occurs when the voltage ...

Why there is no output voltage after the inverter is powered ...

The reason why the inverter has no output voltage is that the inverter circuit is not working, because the possibility of the three upper arms of the inverter circuit being open at ...

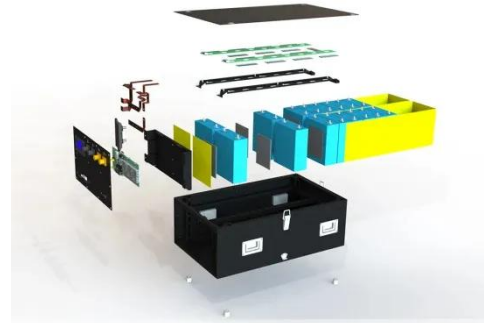


Power Inverter Troubleshooting - Common ...

3. Low or Fluctuating Output Power If connected devices are running slowly, dimly, or erratically, the inverter's output may be low or ...

[SOLVED]

I have a 230VAC inverter that is only giving me about 197VAC with no load, and about the same voltage with load. on a three light voltage tester only the center light ...



Why there is no output voltage after the ...

The reason why the inverter has no output voltage is that the inverter circuit is not working, because the possibility of the three upper ...



Inverter Voltage Drop Issue - How to Solve

Analyzing Output Voltage in Square Wave Inverters In a square wave inverter circuit we will typically find the waveform as shown below across the power devices, which ...



Inverter ringing on high side : how to minimize it?

2 We're seeing quite a lot of ringing on the high-side mosfets, we scope it with the negative of the oscilloscope on the phase output and the positive at the

Outdoor Cabinet BESS
50 kWh/500 kWh Battery Storage System
Industrial and Commercial Energy Storage



- All In One**
Integrating battery packs
- High-capacity**
50 - 500kWh
- Degree of Protection**
IP54
- Operating Temperature Range**
-20~60°C(Derating above 50 °C)
- Intelligent Integration**
integrated photovoltaic storage cabinet
- Rated AC Power**
50-100kW
- Altitude**
3000m(>3000m derating)

+VDC That'll be your ...

How to Troubleshoot and Fix Common Inverter Problems

Here are some steps to follow: Check the input voltage. The input voltage to the inverter should be within the specified range. If the input voltage is too low or too high, the ...



Power Inverter Troubleshooting - Common Problems and ...

3. Low or Fluctuating Output Power If connected devices are running slowly, dimly, or erratically, the inverter's output may be low or inconsistent. Check Wiring and Connections ...

Voltage Troubles? A Guide to Diagnosing Inverter Low Voltage ...

Solutions for Inverter Low Voltage Problems Now that we have identified some potential causes, let's explore the solutions for inverter low voltage

problems. Firstly, if your ...



How to Address Inverter Low Voltage Issues ...

Inverter low voltage is a common issue that can disrupt industrial operations, affecting automation systems and energy ...

Inverter ringing on high side : how to ...

2 We're seeing quite a lot of ringing on the high-side mosfets, we scope it with the negative of the oscilloscope on the phase output and ...



4918 RING MP120 instructions:Layout 1

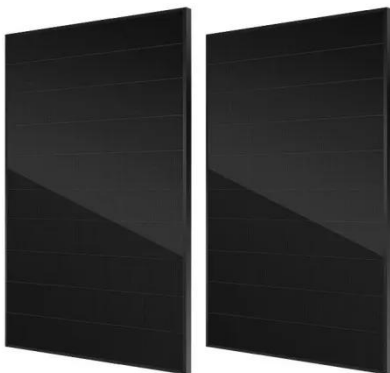
Introduction The Ring MP:120 inverter is an electronic device that converts a low voltage 12v DC current from a battery, or other power supply and provides 230v

AC current.



Inverter Voltage Drop Issue - How to Solve

Analyzing Output Voltage in Square Wave Inverters In a square wave inverter circuit we will typically find the waveform as shown ...



RING RINV 1000, 2000 PowerSource User Manual

RING PowerSource RINV 1000 and RINV 2000 are electronic devices that convert a low voltage 12v DC current from a battery to provide 230-240v AC current. This user manual provides ...

Contact Us

For catalog requests, pricing, or partnerships, please visit:
<https://eqacc.co.za>