

EQACC SOLAR

Maximum charging current of battery cabinet



Overview

What is the maximum charge current of a battery?

Generally, the Maximum Charging current of the batteries is 0.1C or 0.5C to 1C. In other words, the battery can accept the charge current ranges from a minimum of 100mA to a maximum of 400mA. Max charge current prevents battery destruction, ensuring its safe and proper charging. Consequently, it helps in enhancing the lifespan of the battery.

Why does a battery need a maximum charge current?

Max charge current allows the high performance of a battery. It prevents the chemical and physical stresses commonly due to exceeding the current limit during charging. Thus, the battery maintains the charging speed and enhances its efficiency. A specific voltage limit is required to charge the battery, affecting the battery's health efficiently.

What is the maximum charge current for a lithium battery?

The maximum charge current for the lithium batteries varies and is shown by the C-rate, which measures the discharge and charge current relative to the total capacity of the lithium battery. Commonly, lithium batteries typically accept a maximum charge current of 1C. In some cases, it is less than 1C.

What happens if you charge a battery over the maximum charge current?

Charging the battery above the max charge current limit can destroy its internal components. As a result, the battery can lose its functioning. However, the battery with a maximum charging current prevents the wear and tear of its components and preserves its lifespan. Max charge current allows the high performance of a battery.

Maximum charging current of battery cabinet



Operations Manual ZincFive BC Series UPS Battery ...

The Battery Cabinet will remain in the Standby State and will only begin charging when: SOC < 90% and all batteries are between 15°C-40°C Set the UPS to charge the Battery ...

[Get Price](#)

Understanding the Lithium-Ion Battery Charging Cabinet: ...

Lithium-ion batteries power nearly every modern industry--from consumer electronics and electric tools to robotics, energy storage, and logistics. As their applications ...

[Get Price](#)



261kwh High Voltage LiFePO4 Hybrid All in One System ...

IP65, IP55 Cooling Air Cooling or Liquid Cooling Cycle Life 10000 Cycles BMS parallel support connection 4 sets Max charge current 200A Battery Module Nominal Voltage (V) 665.6V ...

[Get Price](#)

Battery Charging Calculator -

IEC & IEEE ...

Battery charging calculations ensure safe, efficient, and reliable energy storage performance across industrial, renewable, and ...

[Get Price](#)



SmartGen HBMS100 Energy storage Battery cabinet

SmartGen HBMS100 Energy storage Battery cabinet. Energy Storage Cabinet. Technical Parameters: Voltage Range (582.4~759.2)VDC Rated Voltage 665.6VDC Cell Specification ...

[Get Price](#)

Deep Cycles Outdoor Pcs All in One Lifepo4 Power Storage ...

Product Name Commercial Energy Storage Battery Cabinet Cycle Life 10000 Cycles Max charge current 200A Battery Module Nominal Voltage (V) 665.6V Battery Capacity 628Ah Operating ...

[Get Price](#)



Maximum charging current

During charging, exceeding the maximum charging current of the batteries can withstand can lead to adverse reactions and may also cause

irreversible damage.

[Get Price](#)



Understanding Maximum Charging Current for Lithium-Ion Batteries

The maximum charging current refers to the highest rate at which a lithium-ion battery can be charged safely without causing damage or reducing its lifespan. This value ...



[Get Price](#)



Specifications for Lithium-ion Battery Cabinets

NOTE: If the battery temperature is higher than the threshold after a full discharge at maximum continuous discharge power, the UPS may have to reduce the charge current to zero to ...

[Get Price](#)

The role and impact of max charge current

Ensure high performance Max charge

current allows the high performance of a battery. It prevents the chemical and physical stresses commonly due to exceeding the current ...

[Get Price](#)



Battery Cabinet

Easy capacity expansion: Batteries can be added along with load increase by stages. New and old battery cabinets can be connected in parallel. Easy maintenance: ...

[Get Price](#)

Peak vs average maximum charging current for li-ion battery

I'm working on a circuit for charging 18650 battery packs. I know that for the longest battery life possible, 18650 batteries should be charged at & It; 1C during the constant ...

[Get Price](#)



What Is the Maximum Charging Current for a 100Ah Battery?

The maximum charging current for a 100Ah battery typically ranges from 20A



to 50A, depending on the battery type and manufacturer specifications. For lithium batteries, a ...

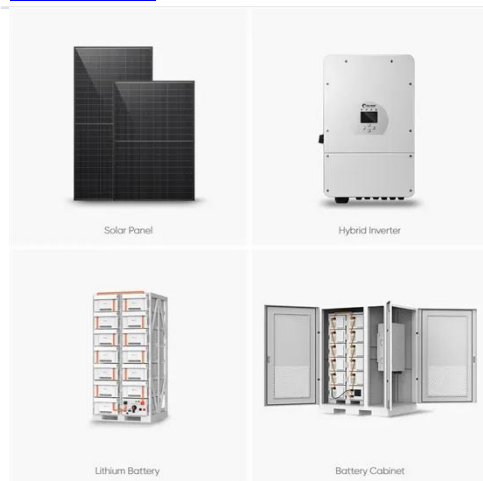
[Get Price](#)

ZincFive BC 2 Series UPS Battery Cabinet Data Sheet, ...

Refer to ZincFive's BC Series UPS Battery Cabinet Service Manual for storage details. All specifications valid at operating temperature range and subject to change.



[Get Price](#)



Data Sheet

The ZincFive UPS Battery Cabinet is the world's first NiZn (Nickel-Zinc) BESS (Battery Energy Storage Solution) product with backward and forward compatibility with ...

[Get Price](#)

Data Sheet

The ZincFive UPS Battery Cabinet is the world's first NiZn (Nickel-Zinc) BESS (Battery Energy Storage Solution) product with backward and forward

compatibility with ...

[Get Price](#)



What is Maximum Charge Current and Charge Cut-off Voltage

Understanding and adhering to the maximum charge current and charge cut-off voltage are essential for maintaining battery health and safety.

[Get Price](#)

What is the maximum charging current for a battery?

As a battery supplier, I often get asked about the maximum charging current for batteries. It's a crucial topic, especially for those who want to make the most out of their ...

[Get Price](#)



Contact Us

For catalog requests, pricing, or partnerships, please visit:
<https://eqacc.co.za>