

EQACC SOLAR

Maintenance purpose of wind and solar complementary solar container communication station

Voltage range

636V-876V

Rated voltage

768V

Cell type

Lithium iron phosphate



Overview

What is hydro wind & solar complementary energy system development?

Hydro“wind“solar complementary energy system development, as an important means of power supply-side reform, will further promote the development of renewable energy and the construction of a clean, low-carbon, safe, and efficient modern energy system.

When was the first wind-solar complementary power generation system launched in China?

The successful grid connection of a 54-MW/100-kWp wind-solar complementary power plant in Nan“ao, Guangdong Province, in 2004 was the first wind“solar complementary power generation system officially launched for commercialization in China.

Does China have a potential for hydro-wind-solar complementary development?

China has made considerable efforts with respect to hydro- wind-solar complementary development. It has abundant resources of hydropower, wind power, and solar power and shows promising potential for future development.

Should wind & solar complementation be regulated after hydropower or pumped-storage hydropower regulation?

After hydropower or pumped-storage hydropower regulation, the total output of wind“solar“hydro complementation should have the least volatility, that is, in turn, beneficial to the consumption of wind and solar power in the grid.

Maintenance purpose of wind and solar complementary solar contain



Control Room Workstation Maintenance Procedure with ...

This post provides the control room workstation maintenance guide with checklist to ensure DCS & PLC HMI reliability, safety, performance, and extended lifespan.

Official Discussion Thread for "ESO's June 2025 Survival Guide"

This is the official discussion thread for, "ESO's June 2025 Survival Guide" "An all-new adventure from the Content Pass, new Golden Pursuits, multiple in-game events, and ...



Wind solar complementary system: prospects of wind solar complementary

As for the application prospects of wind solar complementary systems in the field of communication, people still have confidence in the application prospects of wind solar ...

Checklist to Carry out PLC

Preventive Maintenance Activity

A preventive maintenance checklist is a group of tasks that the technician must complete to close a preventive maintenance work order. The purpose of a preventive ...



Application of wind solar complementary power generation ...

To solve the problem of long-term stable and reliable power supply, we can only rely on local natural resources. As inexhaustible renewable resources, solar energy and wind ...

Step-by-Step Guide to Troubleshooting Radar Level ...

This procedure provides a step-by-step guide to troubleshooting radar level transmitters, ensuring accurate measurements and minimizing downtime in industrial ...



Operating communication base stations with wind and ...

The invention discloses a wind-solar complementary communication base station power supply system which comprises a base, a base station tower,

a solar power generation device, a wind



Checklist: Preventive Maintenance Procedure for Closed ...

Preventive maintenance for DP level transmitters ensures accuracy, reliability, and compliance in closed tank wet leg systems. Download the detailed checklist.



Overview of hydro-wind-solar power complementation development in China

Effective utilization of diverse energy resources, a crucial means of energy supply-side reform, will promote the development of renewable energy, and ensure the long-term and ...

Maintenance et mise à jour 3.2 DOFUS [22/07/2025]

Bonjour, Une maintenance aura lieu le mardi 22 juillet à 8h00 CEST sur les serveurs DOFUS afin de déployer la mise

à jour 3.2 - Osavora. La durée de la maintenance ...



Application of wind solar complementary ...

To solve the problem of long-term stable and reliable power supply, we can only rely on local natural resources. As inexhaustible ...

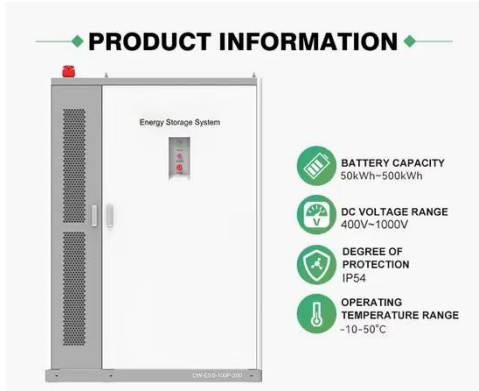
Construction of wind and solar complementary ...

The successful grid connection of a 54-MW/100-kWp wind-solar complementary power plant in NanâEUR(TM)ao, Guangdong Province, in 2004 was the first windâEUR"solar ...



Andorra communication base station wind and solar ...

Energy applications need to complete the urban base station power supply. At present, wind and solar hybrid power supply systems require higher



requirements for base ...

What is maintenance? Types of Maintenance

What is maintenance? Maintenance, a fundamental concept in various sectors, plays a pivotal role in ensuring the smooth operation and longevity of devices, equipment, ...



Complementary configuration and operation of Wind-Solar ...

Complementary configuration and operation of Wind-Solar-Hydropower-Storage Systems: A comprehensive review , IEEE Conference Publication , IEEE Xplore

18 hour maintenance??? -- Elder Scrolls Online

The June 25th maintenance for The Elder Scrolls Online (ESO) is scheduled for 18 hours due to backend database upgrades on the PC megaservers. This

extended downtime is needed for ...



Communication base station wind and solar ...

The wind-solar-diesel hybrid power supply system of the communication base station is composed of a wind turbine, a solar cell module, an integrated controller for hybrid ...



Integrated Solar-Wind Power Container for Communications

Perfect for communication base stations, smart cities, transportation, power systems, and edge sites, it also empowers medium to high-power sites off-grid with an energy-efficient, hybrid ...



Design of Off-Grid Wind-Solar Complementary Power ...

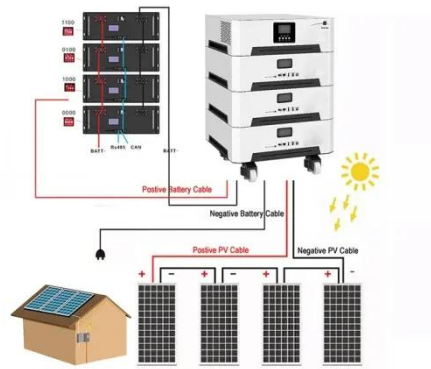
Wind energy and solar energy are new, clean, and renewable energy sources. They are naturally complementary in



seasonality and time, so they can be combined for ...

Maintenance DOFUS [04/11/2025]

Plusieurs milliers de joueurs dans le monde. DOFUS est un jeu de rôle massivement multijoueur où le but est de retrouver les 6 précieux Dofus pour devenir maître ...



Top 10 Essential Maintenance Metrics Every

This article explains 10 key maintenance metrics to boost uptime, reliability, and performance using CMMS and SAP PM.

Contact Us

For catalog requests, pricing, or partnerships, please visit:
<https://eqacc.co.za>