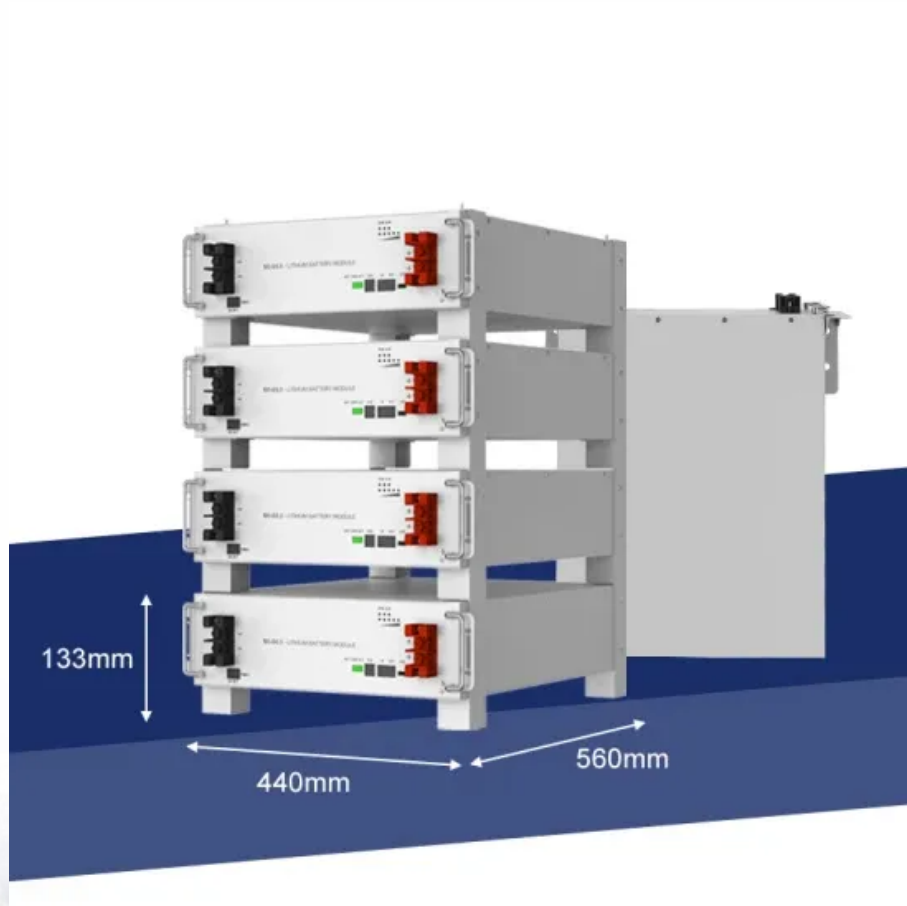


EQACC SOLAR

Installation requirements of battery cabinet in computer room



Overview

What should be included in a battery cabinet?

According to 527 CMR 10 Massachusetts, battery cabinets should be provided with exterior labels that identify the manufacturer and model number of the system and electrical rating (i.e., voltage and current) of the contained battery system. Additionally, signs shall be provided within battery cabinets to indicate the relevant electrical, chemical, and fire hazards.

How should a battery room be located?

This will reduce the cost and exposure of the dc distribution system. The battery room shall be located in a way that provides access for lifting equipment to be used during initial installation and future maintenance operations. The location shall be as free from vibration as practical.

Where should batteries be installed in a substation?

Batteries installed in unit substations, electrical equipment rooms and instrument rack rooms shall comply with the requirements of this section, Main Substation Design and Unit Substation Design. In these locations, stainless steel hoods vented to the outside shall be installed over batteries.

Do vented lead acid batteries need a separate battery room?

Vented lead acid batteries installed in medium voltage main substation buildings and unit substations, electrical equipment rooms and control system rack rooms shall not require a separate, dedicated battery room and shall be in accordance with SES E14-S02. The battery room and installation shall comply with IEEE 484, NFPA 70 and OSHA 29 CFR.

Installation requirements of battery cabinet in computer room



Lead-acid battery installation requirements in the ...

nance free or computer room type batteries and battery cabinets. Main keywords for this article are Battery Room Design Requirements, vented l rooms (lead acid/lithium ion) fire ...

Checklist: Venting Clearance and Code Rules for Battery Cabinets

Stop battery overheating. This checklist details essential venting clearance and code rules for safe, compliant battery cabinet installation.



Battery Room Design Requirements - PAKTECHPOINT

It does not cover maintenance free or computer room type batteries and battery cabinets. Main keywords for this article are Battery Room Design Requirements, vented lead acid batteries, ...

Installation specification of battery

cabinet in computer room

Never install the battery cabinet in an airtight room, in the presence of flammable gases, or in an environment exceeding the specifications. Ensure sufficient amount of ventilation air flow ...



DETAILS AND PACKAGING



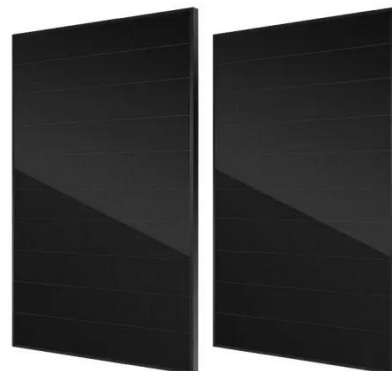
1 USER MANUAL PDF 2 RJ45 Cable For RS485/CAN 3 Battery in Parallel Cables
4 RJ45 TO USB Monitor Cable 5 M8 Terminal*4

Checklist: Venting Clearance and Code Rules ...

Stop battery overheating. This checklist details essential venting clearance and code rules for safe, compliant battery cabinet ...

Requirements and standards for battery installation in ...

Ventilation is crucial for the battery room, as the standards listed above clearly demonstrate. BHS equipment ensures compliance with all relevant battery room ventilation codes -- and, most ...



Battery cabinet installation requirements for computer rooms

Battery Room Design Aspects , PDF , Electrical This document outlines design requirements for battery rooms

containing vented lead acid batteries. It specifies that battery rooms must be ...

CE UN38.3 MSDS



Requirements for the Battery Installation Site

The installation site must meet the requirements of the local fire protection regulations. The available height must be greater than the tilt dimension of the battery cabinet.



What Are the Essential Components of a Data Center Battery Room?

Advanced designs incorporate modular battery cabinets for scalability and real-time monitoring integration. What Safety Standards Govern Data Center Battery Rooms? Key ...

Battery Room Design Requirements - PAKTECHPOINT

Battery Room References
Battery Room Design Requirements
Location of Battery Room
Layout of Battery Room
Battery Room Architectural Requirements
Battery

Room Ventilation & HVAC
 Battery Room Safety Requirements
 Battery Installations in Unit Substations and Equipment Rooms
 Battery Room storage Cabinet The battery shall be located as close as practical to the load. This will reduce the cost and exposure of the dc distribution system. The battery room shall be located in a way that provides access for lifting equipment to be used during initial installation and future maintenance operations. The location shall be as free from vibration as practical. The battery shall be located as close as practical to the load. This will reduce the cost and exposure of the dc distribution system. The battery room shall be located in a way that provides access for lifting equipment to be used during initial installation and future maintenance operations. The location shall be as free from vibration as practical. The location shall be selected so as to protect the battery from flooding and other natural phenomena, and from fire and explosions in the operating areas. See more
 New content will be added above the current area of focus upon selection
 See more on paktechpoint studylib



Battery Room Design

Criteria: Safety

Technical document detailing battery room design, safety, and installation requirements. Covers temperature, ventilation, electrical, and standards.

Installation requirements of battery

INTEGRATED DESIGN

EASY TO TRANSPORT AND INSTALL,
FLEXIBLE DEPLOYMENT

**cabinet in computer room**

What should be installed in a battery room? Emergency lighting with compatible illumination level shall be installed to operate in the event of loss of mains power supply. Battery room doors ...

**Battery Room Design Criteria:
Safety & Installation**

Technical document detailing battery room design, safety, and installation requirements. Covers temperature, ventilation, electrical, and standards.



Contact Us

For catalog requests, pricing, or partnerships, please visit:
<https://eqacc.co.za>