

EQACC SOLAR

How much power does a portable WiFi use



Overview

How much power does a Wi-Fi router use?

Wi-Fi routers use about 10 W (0.01 kW) of power at any one time, meaning just about any battery will be plenty suitable for backing up and powering your Wi-Fi router, even for long periods of time. How many solar panels does it take to run a Wi-Fi router?

.

How many volts does a WiFi router use?

Most routers use around two amps and run on a standard 120-volt outlet, pulling between 5 and 7 volts of energy. While these numbers might mean little to you initially, they're essential to calculating the exact wattage requirements for your WiFi router or converting one measurement to another. How Much Does It Cost To Run a WiFi Router?

.

How much solar power does a WiFi router need?

Since a standard WiFi router needs 5-10 watts of power to perform its functions, a solar panel that can produce at least 5W of power is enough for running the typical router. However, it is better to consider sunlight variations to ensure an uninterrupted power supply. Therefore, using a router with a slightly higher wattage (10W) is preferable.

What is a portable Wi-Fi router?

That's where portable Wi-Fi routers (and mobile hotspots) come in. While traditional home routers stay in one location and connect to your home internet service, portable Wi-Fi routers can go anywhere with you. Some even run on battery power and can reliably connect several devices at once, making them ideal for families and teams.

How much power does a portable WiFi use



How Many Watts does a Wifi Router use?

How many watts does a WiFi router use? WiFi routers are energy-efficient devices, typically consuming 6 to 20 watts per hour. Over a day, month, or year, this small power usage ...

[Get Price](#)

: Wi-Fi Router Power Consumption: How Much Energy Does It Use...

Find out how much power your Wi-Fi router consumes. Get practical advice on when to turn it off to save energy and reduce costs.

18650 3.7V
Li-ion
RECHARGEABLE BATTERY
2000mAh



[Get Price](#)



How Many Watts Does a WiFi Router Use?

The humble WiFi router is a rarely considered source of energy use. But, for most households, it runs all day, every day, and that can quickly add up. If you're trying to ...

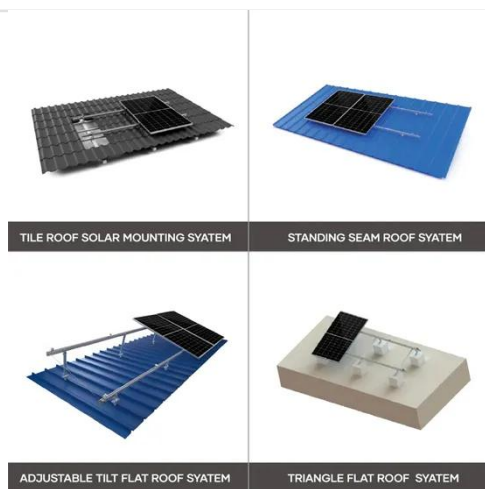
[Get Price](#)

How Many Watts Does a WIFI

Router Use?

Knowing exactly how much power your router uses, and how much that costs per year, provides actionable data to help lower energy usage. You can then make informed ...

[Get Price](#)



: Wi-Fi Router Power Consumption: How ...

Find out how much power your Wi-Fi router consumes. Get practical advice on when to turn it off to save energy and reduce costs.

[Get Price](#)

The 4 Best Portable Wi-Fi Routers in 2025

The TP-Link Ultra-Portable Wi-Fi Router, our best overall pick, requires power through its USB-C port, drawing from either a wall outlet or a portable power bank.

[Get Price](#)



How much power does a Wi-Fi router use?

How Much Power Does a Wi-Fi Router Really Use? A Deep Dive On average, a Wi-Fi router consumes between 2 to 20



watts of power. This translates to roughly 17.5 kWh to ...

[Get Price](#)

How Many Watts Does a WIFI Router Use?

Knowing exactly how much power your router uses, and how much that costs per year, provides actionable data to help lower energy ...

[Get Price](#)



How much power does a Wifi Router use?

As wireless connectivity becomes increasingly ubiquitous, the power consumption of the Wi-Fi router, a cornerstone of modern networking infrastructure, deserves careful ...

[Get Price](#)

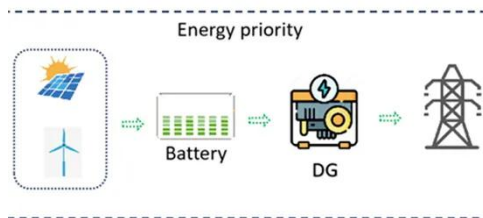
The Surprising Truth About How Many Watts a WiFi Router ...

...

In today's hyper-connected world, the importance of robust, high-speed

internet can't be overstated. Much of this connectivity relies on WiFi routers, which serve as the ...

[Get Price](#)



How Many Watts Does a WiFi Router Use? , Renogy US

Concerned about how many watts does a WiFi router use and when should you turn it off? This read discusses everything, including ways to reduce WiFi router wattage.

[Get Price](#)

How Many Watts does a Wifi Router use?

How many watts does a WiFi router use? WiFi routers are energy-efficient devices, typically consuming 6 to 20 watts per hour. Over ...

[Get Price](#)



Contact Us

For catalog requests, pricing, or partnerships, please visit:
<https://eqacc.co.za>