

EQACC SOLAR

How many volts does a 220v inverter have



Overview

What is a 12V to 240V inverter?

A 12V to 240V inverter is a pivotal device designed to convert direct current (DC) power from a 12-volt battery into alternating current (AC) power with a nominal output of 240 volts. This conversion is vital for running household appliances, electronic devices, and other equipment that require standard AC power.

What voltage does an inverter use?

In different countries, the applicable AC voltage is different, and most countries use 110v, 120v output inverter voltage. You can confirm on the search engine or see how much AC voltage the home appliance label uses. How can the quality of inverter output voltage be measured?

.

How much battery does a 24 volt inverter use?

For 24-volt inverters, it is 10 %. The battery capacity for a 12-volt Mass Sine 12/1200, for instance, is 240 Ah, while a 24-volt Mass Sine 24/1500 inverter would require at least 150 Ah. The indicated battery capacity is only for the inverter. The capacity required for other loads should be added to it. How much power does an inverter consume?

.

Do I need a DC to AC power inverter?

For this, you need a DC-to-AC power inverter that takes the DC voltage a battery provides and inverts it to AC voltage so that you can run an AC-powered device. Read on to learn how to convert AC to DC with our voltage-to-ampereage calculator. The first step to sizing a battery pack when using a DC to AC power inverter is to know your DC amp rating.

How many volts does a 220v inverter have



How many volts does the energy storage ...

How many volts does the energy storage inverter have? 1. Energy storage inverters typically operate within a range of voltages, ...

Understanding inverter voltage

In this article, let's embark on a comprehensive journey to unravel the mysteries surrounding inverter voltage, exploring its nuances, applications, and the Tycorun inverter's ...



How many volts does the energy storage inverter have?

How many volts does the energy storage inverter have? 1. Energy storage inverters typically operate within a range of voltages, commonly between 12V to 60V, 2. The ...

How many volts does a 220v inverter have

How many volts does a 1000 watt power inverter have? When discussing inverters, we usually involve three key parameters: input voltage, output voltage, and power. ...



How many volts does a low voltage inverter have? What is ...

How many volts does a low voltage inverter have? Low voltage inverter refers to 220V380V660V690V inverter. The adjustable output frequency AC motor drive device with a ...

Inverter AC to DC Amperage Conversion Calculator , Battery ...

Learn how to convert AC amps to DC amps through an inverter with our amperage conversion calculator, from Battery Stuff!



Inverter AC to DC Amperage Conversion ...

Learn how to convert AC amps to DC amps through an inverter with our amperage conversion calculator, from Battery Stuff!



Frequently Asked Questions about Inverters

Frequently Asked Questions about Inverters How much battery capacity do I need with an inverter? As a rule of thumb, the minimum required battery capacity for a 12-volt system is ...



PUSUNG-R (Fit for 19 inch cabinet)



What is the size of an Inverter 220V TO 12V?

As a supplier of 220V to 12V inverters, I often get asked about the size of these nifty devices. In this blog, I'm gonna break down everything you ...

Buyer's Guide for 220 Volt Inverters , 220 Volt Appliances

Buyer's Guide for 220 Volt Inverters
Question1: What is a 220 volt power inverter? Answer 1: A 220 volt power inverter is a device that converts low-

voltage DC (direct current) power to ...

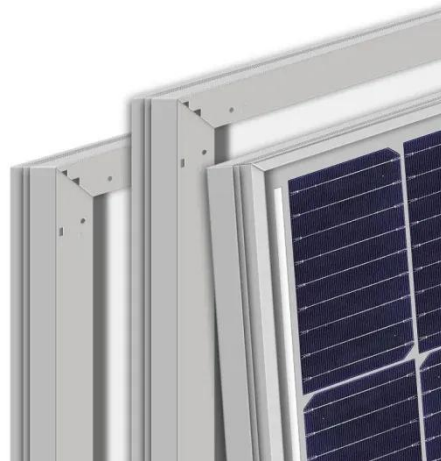


What is the size of an Inverter 220V TO 12V?

As a supplier of 220V to 12V inverters, I often get asked about the size of these nifty devices. In this blog, I'm gonna break down everything you need to know about the size of a 220V to 12V ...

Inverter Current Calculator

The Inverter Current Calculator is an indispensable tool for anyone working with DC to AC power conversion systems. Whether you're installing a new solar setup, upgrading your backup ...



The Only Inverter Size Chart You'll Ever Need

We have created a comprehensive inverter size chart to help you select the correct inverter to power your appliances.



The Only Inverter Size Chart You'll Ever Need

How to Determine What Size Inverter I Need? What Are The Two Types of Power loads? Inverter Size Chart What Will A 300W Inverter Run? What Will A 500W Inverter Run? What Will A 700W Inverter Run? What Will A 1000W Inverter Run? What Will A 1500W Inverter Run? What Will A 2000W Inverter Run? What Will A 3000W Inverter Run? Before we go any further, we highly recommend that you choose a pure sine wave inverter. This type of inverter delivers high-quality electricity, similar to your utility company. This way, none of your appliances run the risk of being damaged. Now, when it comes to sizing your inverter, you always need to check your appliances' wattage and ensure t

See more on [climatebiz Mastervolt](#)



Frequently Asked Questions about Inverters - Mastervolt

Frequently Asked Questions about Inverters How much battery capacity do I

need with an inverter? As a rule of thumb, the minimum required battery capacity for a 12-volt system is ...

Contact Us

For catalog requests, pricing, or partnerships, please visit:
<https://eqacc.co.za>