

**EQACC SOLAR**

# **Greek solar container lithium battery bms function**



## Overview

---

What is a lithium-ion battery management system (BMS)?

Figure 1: Why Lithium-ion Batteries?

The battery management system (BMS) is an intricate electronic set-up designed to oversee and regulate rechargeable batteries, specifically lithium-ion batteries.

What is a BMS for a 12V lithium-ion battery?

A BMS for a 12V lithium-ion battery typically includes several essential features designed to protect and optimize the battery's performance: Voltage Regulation: This ensures each cell within the battery pack maintains the correct voltage, preventing overcharging and undercharging, which are common causes of battery failure.

How does a BMS improve the performance of lithium-ion batteries?

By incorporating a BMS, the performance of the battery is significantly enhanced, ensuring optimal operation and safeguarding against potential hazards that could compromise its efficiency and durability. Now, let's delve into how a BMS enhances the performance of lithium-ion batteries.

How does a battery management system improve the performance of lithium-ion batteries?

Now, let's delve into how a BMS enhances the performance of lithium-ion batteries. The battery management system (BMS) maintains continuous surveillance of the battery's status, encompassing critical parameters such as voltage, current, temperature, and state of charge (SOC).

## Greek solar container lithium battery bms function

---



### Battery Management System Guide: ...

Comprehensive guide to Battery Management Systems (BMS), covering functions, circuits, components, and selection tips for safer, ...

### Battery Management System Guide: Functions, Circuits

Comprehensive guide to Battery Management Systems (BMS), covering functions, circuits, components, and selection tips for safer, more reliable lithium-ion battery packs.


☒ IP65/IP55 OUTDOOR CABINET

☒ IP54/55

☒ OUTDOOR ENERGY STORAGE CABINET

☒ OUTDOOR BATTERY CABINET

### UNDERSTANDING BATTERY MANAGEMENT SYSTEMS BMS THE

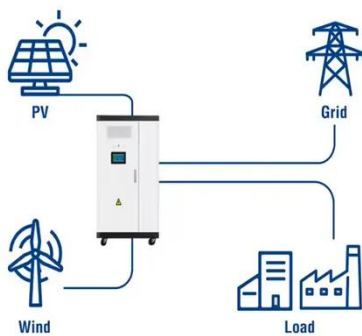
Solar lithium battery bms management system The BMS lithium battery management system determines the status of the entire battery system by detecting the status of each single ...

### Battery Management Systems (BMS) for Solar ...

Choosing the right BMS for your solar battery is critical for maximum benefits. Despite a few common issues, with proper management, a BMS can ...



### Utility-Scale ESS solutions



### How Lithium-ion Battery Management Systems Enhance ...

Understanding Lithium-ion Batteries The battery management system (BMS) is an intricate electronic set-up designed to oversee and regulate rechargeable batteries, specifically ...

### What Is A BMS For Battery

The BMS plays a critical role in ensuring the optimal functioning, longevity, and safety of battery cells, particularly in ...



### BMS, PCS, and EMS in Battery Energy Storage Systems ...

Explore the essential components of Battery Energy Storage Systems (BESS): BMS, PCS, and EMS. Learn their functions, integration, and importance

for efficient, safe ...



## BMS for Lithium-Ion Battery: Essential Guide

A BMS for a 12V lithium-ion battery typically includes several essential features designed to protect and optimize the battery's ...



## BMS, PCS, and EMS in Battery Energy Storage ...

Explore the essential components of Battery Energy Storage Systems (BESS): BMS, PCS, and EMS. Learn their functions, integration, ...



## Battery Management Systems (BMS) for Solar Storage

Choosing the right BMS for your solar battery is critical for maximum benefits. Despite a few common issues, with proper management, a BMS can greatly

enhance solar storage. As ...



## Battery Management Systems (BMS) in Lithium Batteries: ...

A Battery Management System (BMS) is the brain and safety layer of any lithium battery pack. It monitors cells, protects against abuse, balances differences between cells, ...

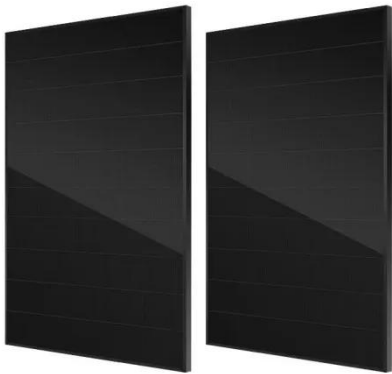
## BMS Insights: Key to Lithium Battery Safety & Efficiency , NAZ Solar

Discover how BMS enhances lithium battery safety & efficiency. Learn the key differences between MOSFET and contactor-based systems for better performance.



## BMS for Lithium-Ion Battery: Essential Guide

A BMS for a 12V lithium-ion battery typically includes several essential features designed to protect and



optimize the battery's performance:  
Voltage Regulation: This ensures ...

---

### How does the battery management system ...

We offer a wide range of lithium battery packs with advanced BMS technology to meet your specific needs. Whether you're a solar ...



---

### Battery Management Systems (BMS) in ...

A Battery Management System (BMS) is the brain and safety layer of any lithium battery pack. It monitors cells, protects against abuse, ...

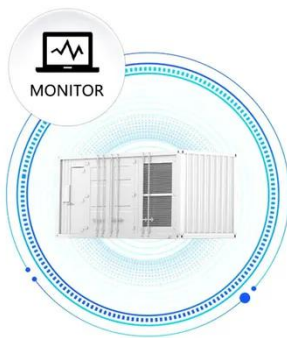
---

### What Is A BMS For Battery

The BMS plays a critical role in ensuring the optimal functioning, longevity, and safety of battery cells, particularly in applications involving rechargeable batteries like lithium ...



SUPPORT REAL-TIME ONLINE  
MONITORING OF SYSTEM STATUS



## How does the battery management system (BMS) work in a lithium battery

We offer a wide range of lithium battery packs with advanced BMS technology to meet your specific needs. Whether you're a solar energy installer, an electric vehicle ...

## BMS Insights: Key to Lithium Battery Safety

Discover how BMS enhances lithium battery safety & efficiency. Learn the key differences between MOSFET and contactor ...



## Contact Us

For catalog requests, pricing, or partnerships, please visit:  
<https://eqacc.co.za>