

EQACC SOLAR

Electrical equipment in network base stations



Overview

What is a wireless base station?

A base station represents an access point for a wireless device to communicate within its coverage area. It usually connects the device to other networks or devices through a dedicated high bandwidth wire of fiber optic connection. Base stations typically have a transceiver, capable of sending and receiving wireless signals;.

What is a base station in telecommunications?

In telecommunications, a base station is a fixed transceiver that serves as the main communication point for one or more wireless mobile client devices. It not only connects wireless devices to each other but also links them to other networks or devices, often through dedicated high-bandwidth wired or fiber optic connections.

What is the main base station equipment connection diagram?

The Core Layout: Main Base Station Equipment Connection Diagram The connection diagram provides a clear overview of how the main base station equipment operates within the network. Surrounding this central "brain" are the "Four Guardians" that ensure seamless functionality:.

What is a base station power system?

The base station power system serves as a continuous "blood supply pump station," responsible for AC/DC conversion, filtering, voltage stabilization, and backup power. Its purpose is to ensure the uninterrupted operation of base station equipment.

Electrical equipment in network base stations



Complete Guide to 5G Base Station ...

Explore how 5G base stations are built--from site planning and cabinet installation to power systems and cooling solutions. Learn the ...

[Get Price](#)

What Does a Base Station Do and Why Is It Essential for ...

Base stations not only enable today's communication, but also pave the way for tomorrow's networks--supporting higher speeds, lower latency, and new services. At ...



[Get Price](#)

Basestation

A recent study showed that global power consumption for cellular base stations will decline due to more efficient equipment and networks by nearly 3% annually while the cost of electricity ...

[Get Price](#)

Radio Base Stations for Secure



Communication

In the world of radio communications, a radio base station plays a vital role in ensuring reliable and seamless communication across a wide area. Whether used in mobile networks, ...

[Get Price](#)



Multi-objective cooperative optimization of communication base ...

This paper develops a method to consider the multi-objective cooperative optimization operation of 5G communication base stations and Active Distribution Network ...

[Get Price](#)

TELECOM SITES POWER CONTROL & MANAGEMENT

Across a network of base stations, you'll find a variety of different equipment and power sources available to keep the network up and running. We will look at situations that ...

[Get Price](#)



Base Stations

What is Base Station? A base station represents an access point for a wireless device to communicate within its



coverage area. It usually connects the device to other ...

[Get Price](#)

Complete Guide to 5G Base Station Construction , Key Steps, Equipment

Explore how 5G base stations are built--from site planning and cabinet installation to power systems and cooling solutions. Learn the essential components, technologies, and ...

[Get Price](#)



Network Rail A Guide to Overhead ...

Neutral sections are electrical "gaps" in the OLE wiring, used to isolate sections of wiring for maintenance purposes and to separate ...

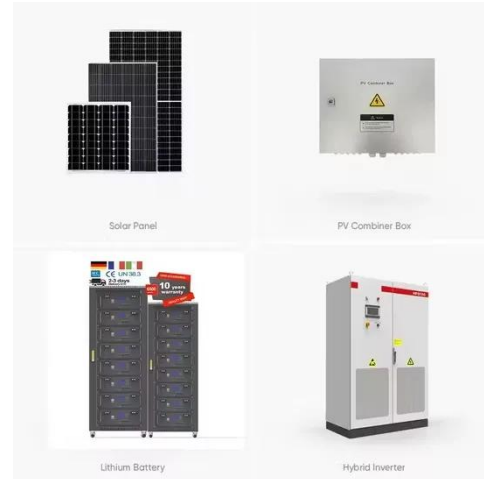
[Get Price](#)

Wireless Base Stations , DEHN

In an age where connectivity is so important, the uninterrupted operation of these base stations is more important

than ever. However, their elevated and exposed nature makes them ...

[Get Price](#)



What Is A Base Station?

What is a wireless sensor network, and how do base stations facilitate connections for these networks? A wireless sensor network (WSN) is a collection of small, wirelessly ...

[Get Price](#)

Equipment in the LTE Network

Building Baseband Unit Provide the physical interface between the base station and the core network Provide the interface to RRU Provide the system clock Manage the ...

[Get Price](#)



Electrical Substation: Equipment, Types, Components

An electrical substation is an integral part of a generation, transmission and



distribution system. A substation can interrupt or establish electrical circuit, change the ...

[Get Price](#)

Basic components of a 5G base station

Download scientific diagram , Basic components of a 5G base station from publication: Evaluating the Dispatchable Capacity of Base Station Backup Batteries in Distribution Networks , Cellular ...



[Get Price](#)



Collaborative optimization of distribution network and 5G base stations

In this paper, a distributed collaborative optimization approach is proposed for power distribution and communication networks with 5G base stations. Firstly, the model of 5G ...

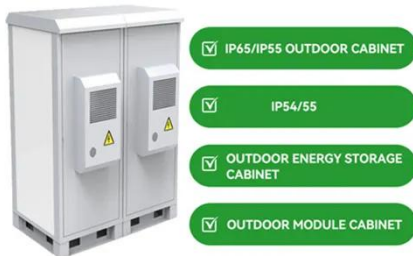
[Get Price](#)

What Is a Base Station? Exploring the Core of 5G Networks ...

Base stations are the core of mobile communication, and with the rise of 5G, thermal and energy challenges are increasing. This article explains the definition, structure, ...

[Get Price](#)

50KW modular power converter



Optimum sizing and configuration of electrical system for

With increasing market competition and declining revenues in mobile services, network operators are compelled to optimize the electrical system of telecommunication base ...

[Get Price](#)

Contact Us

For catalog requests, pricing, or partnerships, please visit:
<https://eqacc.co.za>