

## EQACC SOLAR

# Connect 12 volt battery inverter



## Overview

---

How do you connect a battery to an inverter?

Connect the inverter's positive and negative terminals to the battery, add a fuse on the positive line, and double-check polarity. Match inverter and battery voltage (e.g., 12V to 12V). Always use a fuse or circuit breaker on the positive line. Use thick cables (4 AWG or lower) to prevent voltage drop.

Can a 12V inverter be connected to a 24v battery?

Let's say you have a 12V inverter and try to connect two 12V batteries in series. You would end up inputting 24V to the inverter and cause an overload. This could cause damage to your equipment, at the very least your inverter will shut down to protect itself.

What voltage does a 12V inverter use?

So if you use 2, 5, or 10, 12V batteries the voltage would remain at 12V. This is important as your inverter will be designed for a specific input voltage – usually 12V or 24V. For example, if you connect together two 12V 100Ah batteries the voltage remains at 12V but you now have 200Ah of battery capacity.

Can a small power inverter be plugged into a 12 volt outlet?

Some small power inverters are equipped with DC power cords with plugs that can be plugged into a 12 volt vehicle outlet. Some have a cord set that have battery clips identified as Positive (Red color) and Negative (Black color). Some small inverters have two cords supplied; one with a plug and one with battery clips. 12 Volt Outlets

## Connect 12 volt battery inverter

---



### How to Safely Connect a Battery to an ...

Learn how to safely connect your batteries to your inverter with our guide. Avoid common wiring mistakes to optimize performance ...

---

### How to Wire Inverter to Battery - No Sparks, ...

How to wire an inverter to a battery? Connect the inverter's positive and negative terminals to the battery, add a fuse on the positive ...



### Connecting Multiple Batteries to an Inverter: ...

Need more battery capacity on your inverter? Let's look at how to add more batteries and how many batteries you can connect to an inverter.

---

### How to connect inverter to battery: a step-by-step guide for ...

How to connect inverter to battery: a step-by-step guide for safe and efficient setup We'll explore how to connect inverter to battery, its purpose, and the tools needed for a proper ...



## How to Safely Connect an Inverter to a Car Battery

A power inverter converts the 12-volt direct current (DC) supplied by a vehicle's battery into the 120-volt alternating current (AC) used by standard household electronics. This ...

## Inverter Battery Connection: Essential Tips For Safe And ...

Learn essential tips for safe and efficient inverter battery connection. Discover step-by-step guides, wiring techniques, and troubleshooting tips to optimize your power backup system's ...



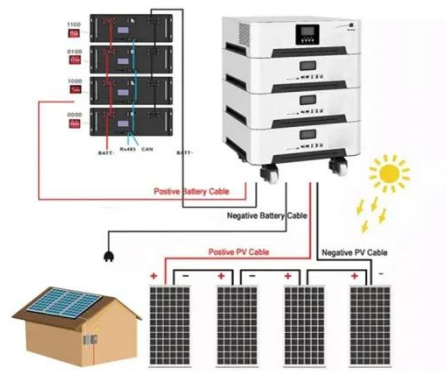
## How to Connect a Large or Small Inverter to a Battery

Furthermore, most 12 volt batteries actually deliver 12.6 to 14 volts while the engine is operating. So, actual watts that can be delivered can be up to 200 watts.



## How to Connect an Inverter to a Battery: Step ...

Learn how to safely and efficiently connect an inverter to a battery with our step-by-step guide. Includes brand-specific tips for Solis, ...



## How to Connect a Large or Small Inverter to a ...

Furthermore, most 12 volt batteries actually deliver 12.6 to 14 volts while the engine is operating. So, actual watts that can be delivered ...

## Connecting Multiple Batteries to an Inverter: Easy Guide

Need more battery capacity on your inverter? Let's look at how to add more batteries and how many batteries you can connect to an inverter.



✓ IP65/IP55 OUTDOOR CABINET

✓ OUTDOOR CABINET WITH AIR CONDITIONER

✓ OUTDOOR ENERGY STORAGE CABINET

✓ 19 INCH

## How to Safely Connect a Battery to an Inverter: A Step-by ...

Learn how to safely connect your batteries to your inverter with our guide. Avoid common wiring mistakes to optimize performance and extend system life.

## How to Connect Inverter to Battery?

To ensure your inverter functions correctly, start by confirming the voltage requirements match those of your battery, typically 12 or 24 volts for most home systems.



## How to connect inverter to battery: a step-by-step guide ...

How to connect inverter to battery: a step-by-step guide for safe and efficient setup We'll explore how to connect inverter to battery, its purpose, and the

tools needed for a proper ...



## How to Wire Inverter to Battery - No Sparks, Just Power

How to wire an inverter to a battery? Connect the inverter's positive and negative terminals to the battery, add a fuse on the positive line, and double-check polarity. Key ...



51.2V 150AH, 7.68KWH



## Correct method for wiring a 12V Battery, Inverter, and Charger?

A 2000 watt inverter on a 12 volt system has the potential to draw in excess of 240 amps. So for your inverter, 1/0 cable would be the bare minimum with 2/0 preferred.

## How to Connect an Inverter to a Battery: Step-by-Step Guide ...

Learn how to safely and efficiently connect an inverter to a battery with our step-by-step guide. Includes brand-specific tips for Solis, Deye, Megarevo,

