

EQACC SOLAR

Can the inverter DC voltage use 220v



Overview

What is a 12V DC to 220V AC inverter?

The 12V DC to 220V AC inverter circuit is designed using IC CD4047. The IC CD4047 acts as a switching pulse oscillating device. The n-channel power MOSFET IRFZ44n acts as a switch. The 12-0-12V secondary transformer inversely used as a Step-up transformer from converting low AC to High AC.

What is a DC to AC inverter circuit?

A DC to AC inverter circuit transforms 12V DC input into 220V AC output, enabling you to power standard household devices from battery sources. This comprehensive guide will walk you through the theory, components, design considerations, and step-by-step construction of a reliable 12V to 220V inverter circuit.

How a voltage driven inverter circuit works?

Here, a simple voltage driven inverter circuit using power transistors as switching devices is build, which converts 12V DC signal to single phase 220V AC. The basic idea behind every inverter circuit is to produce oscillations using the given DC and apply these oscillations across the primary of the transformer by amplifying the current.

What is an inverter circuit?

Inverter Circuit converts Direct Current (DC) supply into Alternating Current (AC) supply.

Can the inverter DC voltage use 220v



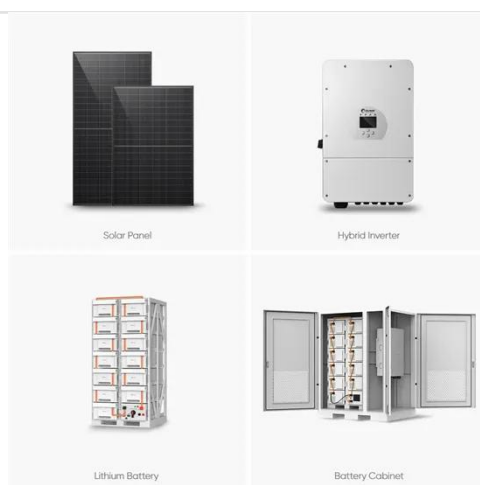
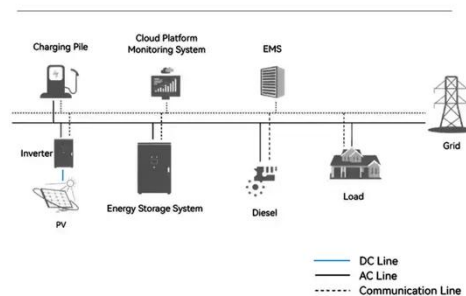
Complete Guide to Building a DC to AC Inverter Circuit: 12V to 220V

Converting direct current (DC) from batteries or solar panels into alternating current (AC) for household appliances is a fundamental requirement in many electrical projects. A DC ...

Make this 12V DC to 220V AC Converter Circuit using IC 555

Now we all already know right that normal inverters do this job also--they take low DC and make it into big AC voltage like our home mains. But those inverters are normally full ...

System Topology

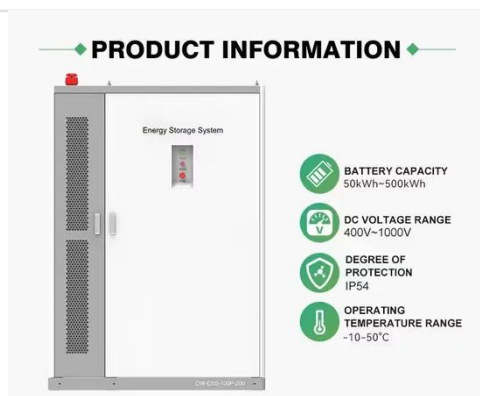


How To Make 12v DC to 220v AC Converter/Inverter Circuit ...

Outline 12V DC to 220V AC Converter Circuit Principle The basic idea behind every inverter circuit is to produce oscillations using the given DC and apply these oscillations ...

How does a 12V to 220V Inverter Work?

If we want to convert 12V DC to 220V AC, we often use the inverter composed of input interface voltage starting circuit, DC conversion circuit, feedback circuit, Ic oscillation ...



12V DC to 220V AC Inverter Circuit using ...

Here 12V DC to 220V AC Inverter Circuit using CD4047 CMOS low power multivibrator IC designed with few easily available ...

12V DC to 220V AC Inverter Circuit & PCB

Inverter Circuit are very much helpful to produce high voltage using low voltage DC supply or Battery. DC-DC Converter circuit can also be used but it has certain voltage ...



12v DC to 220v AC Portable Inverter : 7 Steps

The inverter's design incorporates several critical components to achieve its performance goals. At its core are high-efficiency power MOSFETs used for



switching, providing reliable and ...

Make this 12V DC to 220V AC Converter ...

Now we all already know right that normal inverters do this job also--they take low DC and make it into big AC voltage like our home ...

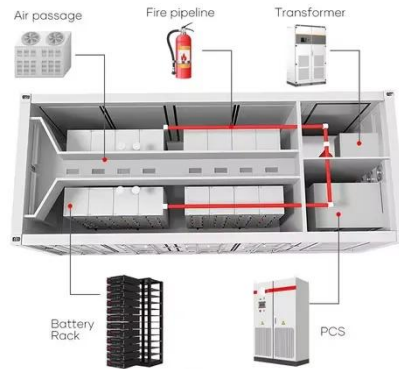


220 Volt Inverter: The Ultimate Guide to Choosing the Right ...

The Ultimate Guide to 220 Volt Inverters In today's world, reliable power sources are essential for both home and outdoor activities. One solution that has gained popularity is ...

How does a 12V to 220V Inverter Work?

If we want to convert 12V DC to 220V AC, we often use the inverter composed of input interface voltage starting circuit, DC ...



12V DC to 220V AC Inverter Circuit using CD4047

Here 12V DC to 220V AC Inverter Circuit using CD4047 CMOS low power multivibrator IC designed with few easily available external components. It can be used as ...

12v DC to 220v AC Portable Inverter : 7 Steps

The inverter's design incorporates several critical components to achieve its performance goals. At its core are high-efficiency ...



Are 220v inverters suitable for home use?

If not maintained properly, the battery life can be shortened, and the performance of the inverter system can be affected. But overall, despite these

drawbacks, 220v inverters can be very ...



Can Inverters Use 220V DC Input Key Insights and Applications

Summary: This article explores whether inverters can handle 220V DC input, their technical feasibility, and applications in industries like renewable energy and industrial power systems. ...



Complete Guide to Building a DC to AC ...

Converting direct current (DC) from batteries or solar panels into alternating current (AC) for household appliances is a fundamental ...

Contact Us

For catalog requests, pricing, or partnerships, please visit:
<https://eqacc.co.za>