


EQACC SOLAR

Can a 20a battery be plugged into an inverter

CE UN38.3 



Overview

Do inverters and batteries need to match?

The inverter and batteries must match in terms of voltage, capacity, and power output. If you are using a 12V battery, then the input voltage of the inverter must match the battery voltage. If the specifications of the battery and the inverter do not match, the system will not operate stably and may even damage the equipment.

Can a power inverter charge a battery?

A power inverter is great for energy needs. It can easily take battery DC power and convert it to AC power. However, as you use that AC electricity, your battery life starts to go down, and you need a charge. Eventually, a power inverter will leave you with a dead battery unless you can charge your battery while connected to an inverter.

How many batteries can a 36V inverter charge?

If there are three 12V 200ah batteries, the battery voltage is 36V ($12V \times 3 = 36$). An inverter with a 36V can recharge these batteries. The maximum capacity is 600ah ($200 \times 3 = 600$). Battery Parallel Connection. If the battery bank is connected in parallel, the battery bank capacity increases but the battery voltage is the same as each cell.

How many batteries can a 20A Charger handle?

A 20A charger can handle 240ah battery maximum. The formula is $A \times 12 =$ battery capacity (ah). If it is a 40A charger the limit is 480ah. It can be any number of batteries as long as the total ah does not exceed the charge current limit. How Much Current is Needed to Charge an Inverter Battery?

Can a 20a battery be plugged into an inverter



Can I Use Inverter While Charging Battery

Using an inverter during battery charging can be convenient, especially during power outages or when running appliances from solar energy. However, doing it incorrectly ...

How Many Batteries can Be Connected To An Inverter?

An inverter is only as good as the power source. Discover how many batteries you can connect to an inverter and get the most out of it.



How Many Batteries can Be Connected To An Inverter?

How Much Current Is Needed to Charge An Inverter Battery? Series vs. Parallel Inverter Battery Configuration How to Connect Batteries in Series and Parallel Can An Inverter Run Without A Battery? Conclusion The first thing you have to do is figure out how much current is required. Fortunately the process are very simple. Suppose you have a high quality 200ah battery like the BatteryJack 12V AGM. Using the

formula above a 20A charge current will be enough. A higher charge current is needed for larger battery capacities. Now the question is, how long will it take to charge a battery? See more on [portablesolarexpert](#) [cornwallsolarcompany](#)

Can You Charge a Battery While Using an ...

You can absolutely charge a battery with an inverter connected. In fact, it can actually help your inverter and battery last longer! Before you start let's ...

Correct method for wiring a 12V Battery, Inverter, and Charger?

This is my first DIY project using a LifePo4 battery. I purchased a LiTime 12V 230Ah Battery, 12V 2000W Inverter, and 12V 20A Lithium Battery Charger (14.6V). I'd like to ...



Can I Use an Inverter to Charge a Battery

Learn how using an inverter can charge your battery effectively and safely, ensuring your power needs are met confidently and reliably.

Does an Inverter Charge a Battery?

However, in some applications, an inverter can be used with a battery charger to provide stable AC power to the charger, thereby ...



Can a Lithium Battery Be Charged by an Inverter?

Yes, a lithium battery can be charged by an inverter, provided the inverter is designed for this purpose. Typically, inverters convert DC power to AC power, but certain ...

Does an Inverter Charge a Battery?

However, in some applications, an inverter can be used with a battery charger to provide stable AC power to the charger, thereby indirectly charging the battery. For example, ...



Charging Battery While Connected To Inverter: The Best Way

Power Inverter As we dive into power source options and using a battery charger, it's important to understand how the power ...



Can You Charge a Battery While Using an Inverter?

You can absolutely charge a battery with an inverter connected. In fact, it can actually help your inverter and battery last longer! Before you start let's take a look at the different aspects of ...



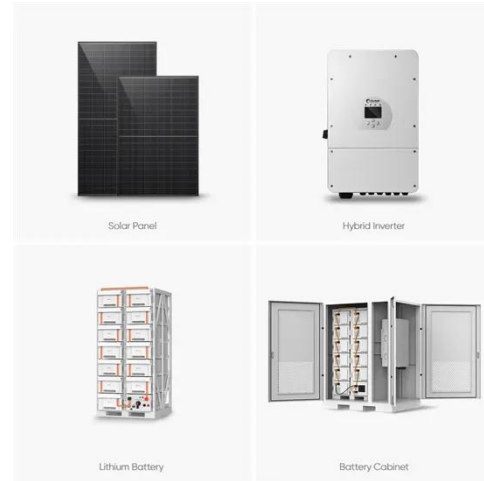
How to Safely Connect a Battery to an Inverter: A Step-by ...

Learn how to safely connect your batteries to your inverter with our guide. Avoid common wiring mistakes to optimize performance and extend system life.

Charging Battery While Connected To Inverter (Explained!)

Can I charge a battery while it's connected to an inverter? in short, the answer is Yes, you can charge a battery while using an inverter. but make sure

that the load should be ...

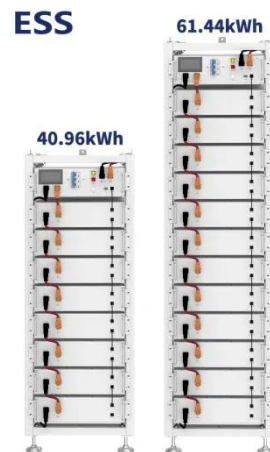


Charging Battery While Connected To Inverter: The Best Way ...

Power Inverter As we dive into power source options and using a battery charger, it's important to understand how the power inverter gets its energy. Most inverter set-ups have an inverter ...

Charging Battery While Connected To ...

Can I charge a battery while it's connected to an inverter? in short, the answer is Yes, you can charge a battery while using an ...



Contact Us

For catalog requests, pricing, or partnerships, please visit:
<https://eqacc.co.za>