

EQACC SOLAR

Bifacial double-glass modules generate electricity from the back



Overview

How do bifacial solar panels generate electricity?

Bifacial solar panels generate electricity by capturing sunlight on both the front and rear sides. A portion of sunlight is directly absorbed by the solar cells, while some light gets trapped within the panel glass and eventually absorbed.

What is bifacial solar technology?

Therefore, we can say that bifacial technology is a relatively new development in solar panel design that presents both opportunities and challenges. Bifacial solar modules are modules that generate energy on both their front and rear sides, based on solar cells with two active sides.

Why do bifacial modules have glass panels?

Manufacturers tend to prefer glass panels on both the front and rear sides of a bifacial module because these designs tend to better transmit light and are more resistant to inclement weather, moisture permeation, corrosion, and more excellent mechanical load ability.

Are bifacial panels a monofacial?

Monofacial modules usually include a solid backsheet which blocks any possibility of light capturing on the rear side. However, with bifacial panels, the back side requires a translucent material that allows sunlight to pass through. Many bifacial panel designs, including Trina Solar's, use a double glass structure for this purpose.

Bifacial double-glass modules generate electricity from the back

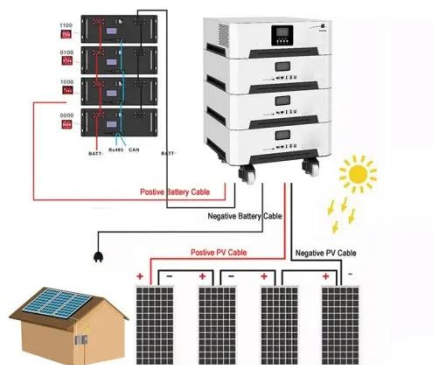


TOPCon's Bifaciality Solar Panel Compared to BC Brings a ...

The new generation of N-type TOPCon technology modules, through the combination of innovative rear optical design and high-transmittance glass, successfully ...

Bifacial Solar Panels: Design, Efficiency & Use ...

Some bifacial modules use a clear or transparent backsheet instead of dual-glass to reduce weight and cost, while still allowing ...



Krannich Solar Germany: Bifacial modules: MAXIMIZING ...

Bifacial modules Optimally Utilizing Double-Sided Solar Panels Bifacial solar modules generate electricity not only from direct sunlight but also from indirect light that ...

Why Dual-Glass Is Not the Same as Bifacial: A Guide to ...

An explanation of the structural differences between dual-glass and bifacial solar modules, the mechanism behind rear-side power generation, and suitable application ...



Bifacial solar panels: What you need to know

Learn about bifacial solar panels, an innovative double-sided panel technology that produces even more energy.

Enhancing optical performance of bifacial PV modules

In contrast to monofacial cells, bifacial solar cells are able to harvest sunlight from both front and rear side. Bifacial cells can be encapsulated into different module structures: ...



The Difference Between Bifacial Module and Double Glass Bifacial Module

Bifacial solar modules and double glass bifacial solar modules are both types of solar panels designed to capture sunlight

from both sides (front and back) to generate ...



BIFACIAL SERIES - GLASS-TO-GLASS PHOTOVOLTAIC ...

The bifacial dual sided glass module (G2G) generates more electricity by converting direct, radiant and scattered solar energy on both the front and the back side of the module.



Bifacial Solar Panels: Design, Efficiency & Use Cases

Some bifacial modules use a clear or transparent backsheet instead of dual-glass to reduce weight and cost, while still allowing sunlight to reach the rear side of the solar cells. ...

Krannich Solar Germany: Bifacial modules: ...

Bifacial modules Optimally Utilizing Double-Sided Solar Panels Bifacial solar modules generate electricity not only from direct ...



Double-glass panels generate electricity from the back

How do bifacial solar panels work? Bifacial solar PV modules, commonly known as Bifacial solar panels, generate power from both the front and rear, or backside, of the module. Unlike ...

How bifacial PV modules work: Factors that affect rear side ...

Monofacial modules usually include a solid backsheet which blocks any possibility of light capturing on the rear side. However, with bifacial panels, the back side requires a ...



How bifacial PV modules work: Factors that ...

Monofacial modules usually include a solid backsheet which blocks any possibility of light capturing on the rear side. However, with ...



Contact Us

For catalog requests, pricing, or partnerships, please visit:
<https://eqacc.co.za>