

**EQACC SOLAR**

# **Battery connected to inverter over-discharge**



## Overview

---

### Why do Inverter Batteries weaken?

An inverter battery weakens due to deep discharges below recommended levels, overcharging, high operating temperatures, poor maintenance (especially for lead-acid batteries), and incorrect installation. Regular maintenance, proper charging, and avoiding extreme conditions help prolong battery life.

### Do inverters and batteries need to match?

The inverter and batteries must match in terms of voltage, capacity, and power output. If you are using a 12V battery, then the input voltage of the inverter must match the battery voltage. If the specifications of the battery and the inverter do not match, the system will not operate stably and may even damage the equipment.

### What is an inverter battery?

An inverter battery is a specially designed energy storage solution that powers an inverter during electricity outages. Unlike automotive or starter batteries—which provide short bursts of high current to start engines—inverter batteries are built for deep-cycle performance, meaning they release a steady amount of energy over a longer duration.

### Do inverters need batteries?

For most residential and small commercial setups, the traditional battery and power inverter combo is the preferred choice to ensure continuous power supply during blackouts. So, while some inverter types do not require batteries, if your priority is uninterrupted backup power, investing in a quality battery in inverter system is essential.

## Battery connected to inverter over-discharge



### Solar Cell Connected to Inverter Over Discharge A Technical

Imagine your solar battery as a marathon runner: push it beyond its limits without recovery, and you'll see permanent damage. This article explores practical solutions for solar cell connected ...

### Optimizing battery lifespan via inverter charge-discharge ...

Understanding Battery Health Before diving into the specifics of charge/discharge settings, it's essential to grasp the basics of battery health. Batteries, whether they're lead ...



### How to Safely Connect a Battery to an Inverter: A Step-by ...

Learn how to safely connect your batteries to your inverter with our guide. Avoid common wiring mistakes to optimize performance and extend system life.

### Depth of Discharge: How It Impacts

## Your Inverter Battery ...

Conclusion Understanding Depth of Discharge is key to maintaining your inverter battery and ensuring it delivers peak performance over time. Whether you're using your ...



## How to Prevent Inverter from over-discharge AGM battery

I have read here (thanks) that you can't use a Victron Battery protector between a battery and an inverter. I need to prevent the inverter from draining an AGM battery below ...



## How to Safely Connect a Battery to an ...

Learn how to safely connect your batteries to your inverter with our guide. Avoid common wiring mistakes to optimize performance ...



- ☒ LIQUID/AIR COOLING
- ☒ ON GRID/HYBRID
- ☒ PROTECTION IP54/IP55
- ☒ BATTERY /6000 CYCLES

## How to Fix Solar Battery Over Discharge: A Comprehensive ...

Discover how to fix solar battery over discharge with our comprehensive guide. Gain useful insights on prevention and optimal performance.



## Ultimate Guide to Battery in Inverter: Choose & Maintain Right

Discover how to choose, maintain, and maximize your battery in inverter for reliable backup power. Expert tips on inverter batteries, lifespan, and safety included!



## How to Battery Protect against Low Discharge with Inverter

How to Battery Protect against Low Discharge with Inverter I have a Victron Multiplus 12/1600/70 connected to a Champion LiFePo4 200Ah. The object is to provide ...

## How to Prevent Inverter from over-discharge ...

I have read here (thanks) that you can't use a Victron Battery protector between a battery and an inverter. I need to prevent the inverter ...

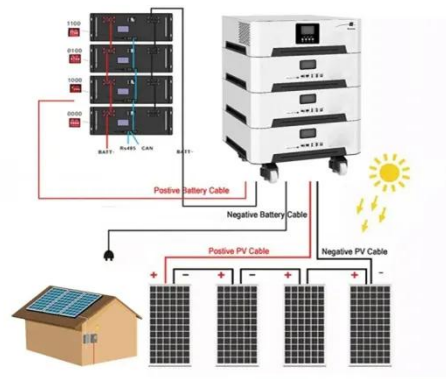


## How does a hybrid inverter handle battery over

In addition to protecting the battery from over - discharge, hybrid inverters also play a role in recharging the battery properly. Once the battery voltage has dropped and the discharge has ...

## Depth of Discharge: How It Impacts Your ...

Conclusion Understanding Depth of Discharge is key to maintaining your inverter battery and ensuring it delivers peak ...



## The impact of over-discharge on lithium-ion battery ...

Lithium-ion batteries (LIBs) are indispensable for modern energy storage systems due to their high energy density and long-lasting cycle lifetime. However,



over-discharge (OD), ...

## Contact Us

---

For catalog requests, pricing, or partnerships, please visit:  
<https://eqacc.co.za>