

**EQACC SOLAR**

# **Base station power outage backup power supply**



## Overview

---

Is there a mismatch between backup batteries and power outages?

Our real trace-driven data analysis clearly reveals that in the battery allocation strategy currently used in practice, there exists a mismatch between the supporting ability of backup batteries and the power outage situations in each base station. The mismatch can lead to serious problems in base stations.

Which battery is best for telecom base station backup power?

Among various battery technologies, Lithium Iron Phosphate (LiFePO<sub>4</sub>) batteries stand out as the ideal choice for telecom base station backup power due to their high safety, long lifespan, and excellent thermal stability.

Why is backup power important in a 5G base station?

With the rapid expansion of 5G networks and the continuous upgrade of global communication infrastructure, the reliability and stability of telecom base stations have become critical. As the core nodes of communication networks, the performance of a base station's backup power system directly impacts network continuity and service quality.

Can a base station predict a power outage?

Though each single power outage of one given base station is truly hard to predict precisely, the statistical long-term power outage trends (e.g., in every year) can have a very similar pattern (e.g., a base station built in cold area may suffer from several power outages due to the heavy snow every year).

## Base station power outage backup power supply

---

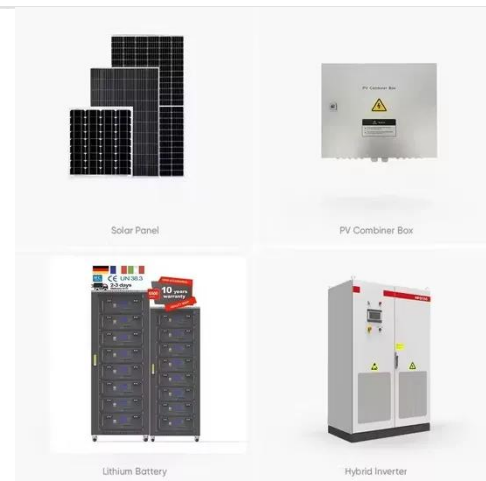


### Securing Backup Power for Telecom Base ...

Securing backup power for telecom base stations is a multifaceted challenge that requires a comprehensive ...

### Securing Backup Power for Telecom Base Stations - leagend

Securing backup power for telecom base stations is a multifaceted challenge that requires a comprehensive approach--encompassing robust system design, advanced ...



### Understanding Backup Battery Requirements for Telecom Base Stations

Telecom base stations require reliable backup power to ensure uninterrupted communication services. Selecting the right backup battery is crucial for network stability and ...

## Communication Base Station Backup

## Power Selection Guide

Why Backup Power Systems Are the Lifeline of Modern Telecom Networks?  
When a typhoon knocks out grid power across Southeast Asia, how do operators ensure communication base ...



### A Guide to Selecting UPS Power Supplies for Base Stations

Learn how to choose the right UPS power supplies specifically designed for base stations, ensuring uninterrupted power backup and reliable operation.

### Backup Power Supply System Using Fuel Cells as ...

Backup Power Supply System Using Fuel Cells as Disaster Countermeasure for Radio Base Stations The Great East Japan Earthquake of 2011 underscored the need for ...



### A Device that Controls the Power Supply Sources of a ...

ABSTRACT- In this research work, the classifications of the device that controls the energy supply sources of the mobile communication base station are



presented. The device is ...

## Sequential load restoration with decision-dependent 5G base station

Firstly, backup batteries power BS communication during the outage. In the following two stages, as the DS power is restored, BSs are re-energized, and the backup ...



## Back-up Power

5.4 Backup power and UPS The selection of uninterruptible power supply (UPS) with back-up power devices is an important issue of great concern in case of fault conditions ...

## Machine learning for base transceiver stations power failure ...

Base Transceiver Stations (BTS) are fundamental building blocks of cellular mobile networks, establishing seamless

wireless connection between user equipment and core ...



## Backup Battery Analysis and Allocation against Power Outage ...

Base stations have been widely deployed to satisfy the service coverage and explosive demand increase in today's cellular networks. Their reliability and availability heavily ...

## Understanding Backup Battery Requirements ...

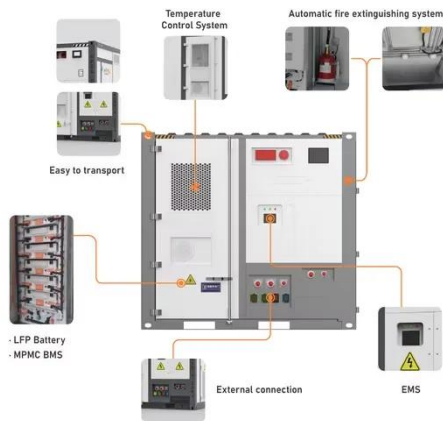
Telecom base stations require reliable backup power to ensure uninterrupted communication services. Selecting the right backup battery ...



## What Powers Telecom Base Stations During Outages?

Telecom batteries for base stations are backup power systems using valve-regulated lead-acid (VRLA) or lithium-ion batteries. They ensure uninterrupted

connectivity ...



## Backup Battery Analysis and Allocation against Power ...

Battery groups are installed as backup power in most of the base stations in case of power outages due to severe weathers or human-driven accidents, particularly in remote ...



## Emergency Power Supplies for Power Outage

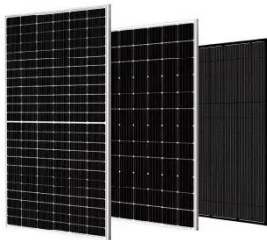
Disasters and power outages are inevitable. Be prepared with our guide to emergency power supplies during an outage.

## BatAlloc , Proceedings of the Eighth International ...

Base stations play a key role in today's cellular networks. Their reliability and availability heavily depend on the electrical power supply. Modern power



grid is known to be highly reliable, but ...



### **Optimization of Communication Base Station ...**

In the communication power supply field, base station interruptions may occur due to sudden natural disasters or unstable ...

### **Backup Battery Analysis and Allocation against Power Outage ...**

Base stations have been widely deployed to satisfy the service coverage and explosive demand increase in today's cellular networks. Their reliability and availability heavily ...



### **Uninterrupted Communication: Complete Backup Power ...**

When the main grid fails, how can telecom base stations keep running? For telecom operators, a power outage never means 'service suspended.'



Whether it's a grid failure caused by natural ...

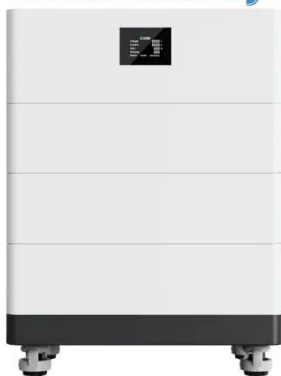


## Communication Base Station Backup Battery

Communication and Base Station Backup Power Core Application Scenarios 5G micro base station 45V output meets RRU equipment requirements, automatically switches seamlessly ...



## High Voltage Solar Battery



## Telecom Base Station Backup Power Solution: Design Guide ...

Discover the 48V 100Ah LiFePO4 battery pack for telecom base stations: safe, long-lasting, and eco-friendly. Optimize reliability with our design guide.

## Telecom Base Station Backup Power Solution: ...

Discover the 48V 100Ah LiFePO4 battery pack for telecom base stations: safe, long-lasting, and eco-friendly. Optimize reliability with ...



### **The generator distribution problem for base stations during ...**

Motivated by the need for uninterrupted service provision in the telecommunications industry, this paper presents a novel problem concerning the transportation of diesel ...

### **Do You Have to Resynch Arlo Cameras After Power Outage ...**

4 hours ago No, you typically don't have to resync Arlo cameras after a power outage --most models automatically reconnect to the base station or Wi-Fi once power and internet are ...



## **Contact Us**

For catalog requests, pricing, or partnerships, please visit:  
<https://eqacc.co.za>