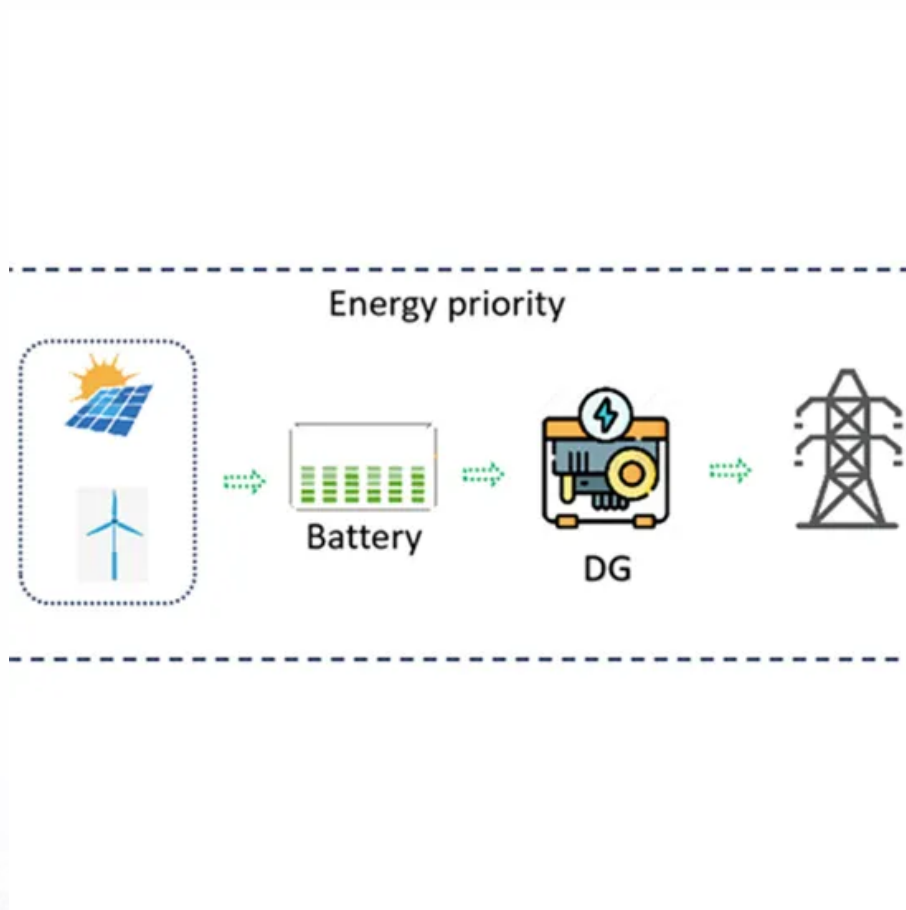


EQACC SOLAR

3 6 kw solar inverter factory in Netherlands



Overview

How big is residential solar PV in the Netherlands?

The average size of residential solar PV systems is estimated to be 4.69 kW moving to 2030. The technical potential for residential solar PV in the Netherlands is estimated at 13,945 MW. The payback time for residential Solar PV in the Netherlands is 9.7 years as of 2015.

Where can Deye solar inverter be installed?

Deye Solar inverters have been installed in more than 60 countries (e.g. Australia, Brazil, India, the UK, Germany, Italy, Belgium, Spain etc.) SUN 3.6/6K-SG hybrid inverter, is suitable for residential and light commercial use, maximizing self-consumption rate of solar energy and increasing your energy independence.

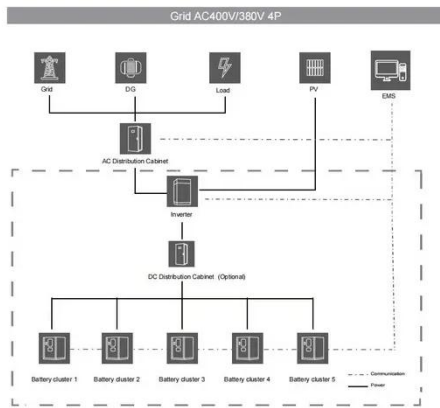
What is the largest solar installation in the Netherlands?

2016 The largest solar installation in the Netherlands, the 6 MW array at the Wadden-Island Ameland was officially opened in June 2016. Installed capacity per capita rose to 120.1 W, thirteenth position in the EU and nearer to the EU average of 197.8 W than in preceding years.

How many companies are involved in inverter production?

Companies involved in Inverter production, a key component of solar systems. 10 Inverter manufacturers are listed below. List of Inverter manufacturers. A complete list of component companies involved in Inverter production.

3 6 kw solar inverter factory in Netherlands



0.7-3.6kW PV string inverter_ Residential inverter

The S6-GR1P (0.7-3.6)K-M inverter is designed for residential PV systems. Its 16A maximum input current per string supports high-efficiency and bifacial modules. The unit is compact, ...

Solis S6 3.6kW 1 fase hybride (Solis-S6 ...

De Solis S6-EA1P3.6K-L is een krachtige omvormer voor zonnepanelen met een vermogen van 3,6 kW. Het model biedt betrouwbare prestaties en ...



DEYE SUN-3.6/5K Hybrid Inverter 3.6/5kW Single Phase

The DEYE SUN-3.6/8K-SG05 hybrid inverter is suitable for residential and light commercial use, maximizing the use of solar energy and increasing your energy independence.

0.7-3.6kW PV string inverter_ Residential ...

The S6-GR1P (0.7-3.6)K-M inverter is designed for residential PV systems. Its 16A maximum input current per string supports high-efficiency and ...



Solis 3.6kW -2MPPT

S6-Gr1P (2.5-6) K series inverter is designed for residential PV plants. The maximum input current per string is 14A, which is compatible with high-efficiency modules and bi-facial ...

Sunway Deye 3.6kw 5kw 6kw 230V Single Phase Hybrid Solar Inverter

Hybrid Inverter SUN 3.6/6K-SG, hybrid inverter, is suitable for residential and light commercial use, maximizing self-consumption rate of solar energy and increasing your energy ...



Xavier Best Crown 3.6 kW inverter

Crown 3.6 kW inverter Pure sine wave solar inverter Wide DC input range With 5" LCD & touchpad Wide DC input range Configurable AC/Solar input priority via LCD setting ...



SO FAR 3-6KTLM-G3

3~6KTLM-G3 is a grid-connected PV inverter designed for household scenarios. It has a maximum conversion efficiency of up to 98.4% and ...



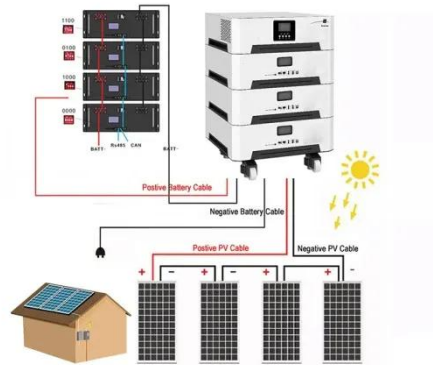
Neovolt-ESS-3.6~5kW , Bytewatt Technology ...

The inverter power contains 3.6kW/5kW ..and support max 3 sets in parallel. The single phase system compatible with 5kwh/ 10kWh battery, which ...

Solar Inverter Manufacturers from Netherlands

Solar Inverter Manufacturers from Netherlands Companies involved in Inverter production, a key component of solar systems. 10 Inverter manufacturers

are listed below.



Deye SUN-3.6/5/6K-SG03LP1-EU , 3.6-6kW , Single Phase , 2 ...

SUN-3.6/5/6K-SG03LP1-EU hybrid inverter, is suitable for residential and light commercial use, maximizing self-consumption rate of solar energy and increasing your energy independence. ...

Neovolt-ESS-3.6~5kW , Bytewatt Technology Co.,Ltd.

The inverter power contains 3.6kW/5kW ..and support max 3 sets in parallel. The single phase system compatible with 5kwh/ 10kWh battery, which use the tier1 brand cells.



Solis S6 3.6kW 1 fase hybride (Solis-S6-EA1P3.6K-L)

De Solis S6-EA1P3.6K-L is een krachtige omvormer voor zonnepanelen met een vermogen van 3,6 kW. Het model biedt betrouwbare prestaties en een hoge

efficiënti



Sunway Deye 3.6kw 5kw 6kw 230V Single Phase Hybrid ...

Hybrid Inverter SUN 3.6/6K-SG, hybrid inverter, is suitable for residential and light commercial use, maximizing self-consumption rate of solar energy and increasing your energy ...



SOFAR 3-6KTLM-G3

3~6KTLM-G3 is a grid-connected PV inverter designed for household scenarios. It has a maximum conversion efficiency of up to 98.4% and supports 2-way MPPT design with 1.5 ...

Xavier Best Crown 3.6 kW inverter

Crown 3.6 kW inverter Pure sine wave solar inverter Wide DC input range With 5" LCD & touchpad Wide DC input range Configurable AC/Solar ...



Deye SUN-3.6/5/6K-SG03LP1-EU , 3.6-6kW

SUN-3.6/5/6K-SG03LP1-EU hybrid inverter, is suitable for residential and light commercial use, maximizing self-consumption rate of solar energy ...

Contact Us

For catalog requests, pricing, or partnerships, please visit:
<https://eqacc.co.za>